

メコン河流域の水資源開発とMRC

第一部：メコン河の特徴

第二部：メコン河の課題

第三部：メコン河委員会の挑戦

平成18年5月15日

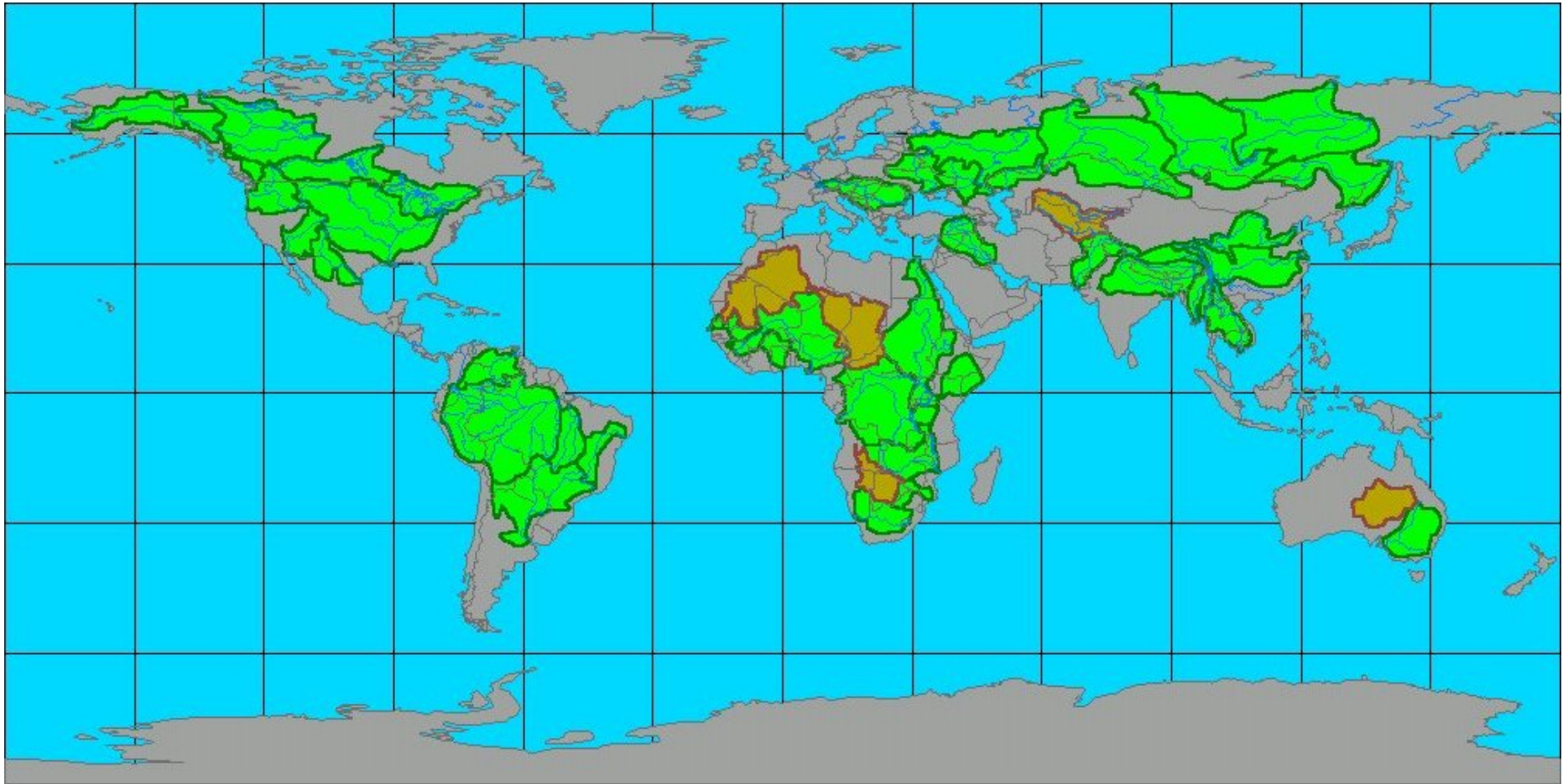
メコン河委員会(MRC) 専門家

岩見 洋一

第一部：メコン河の特徴

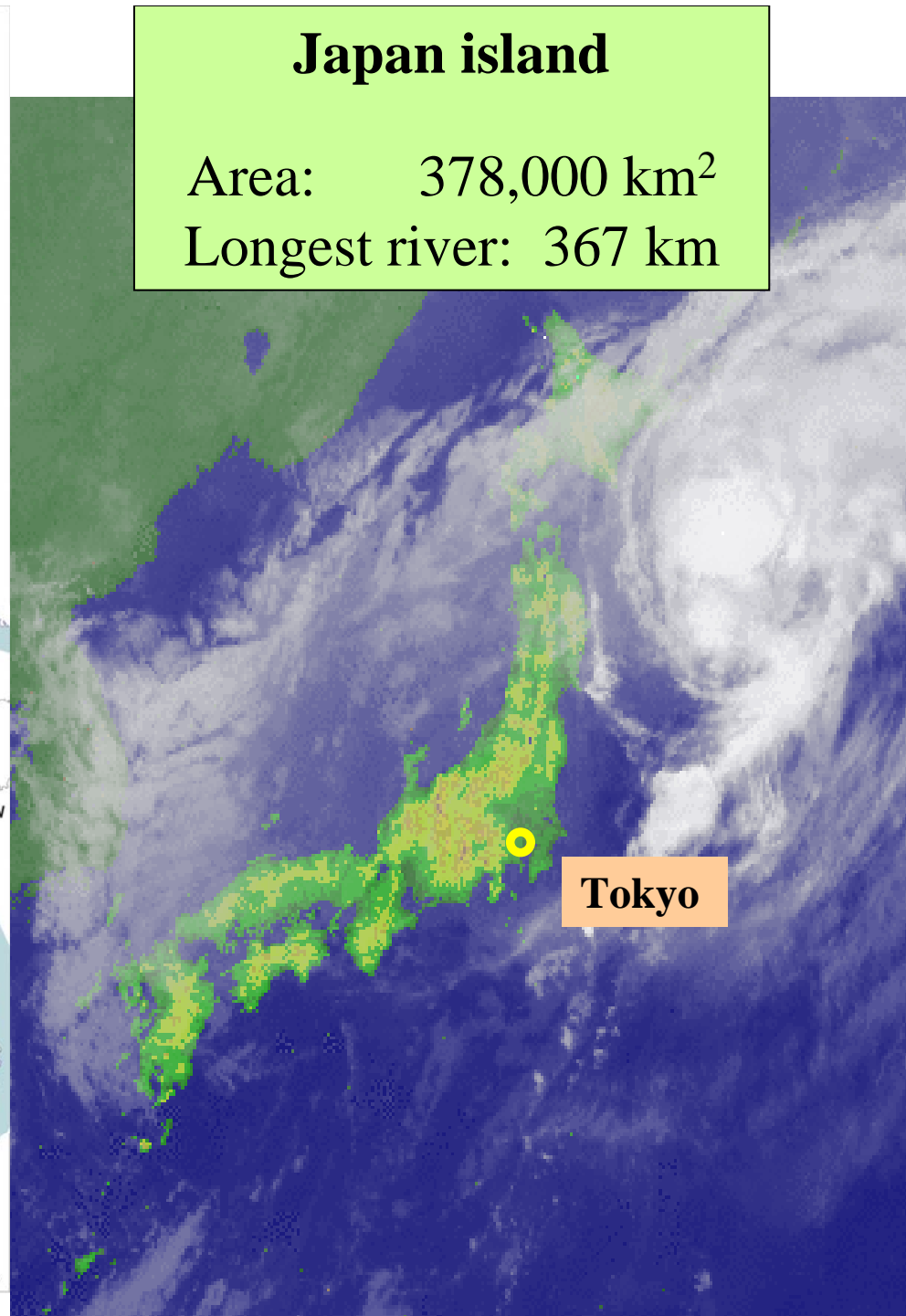
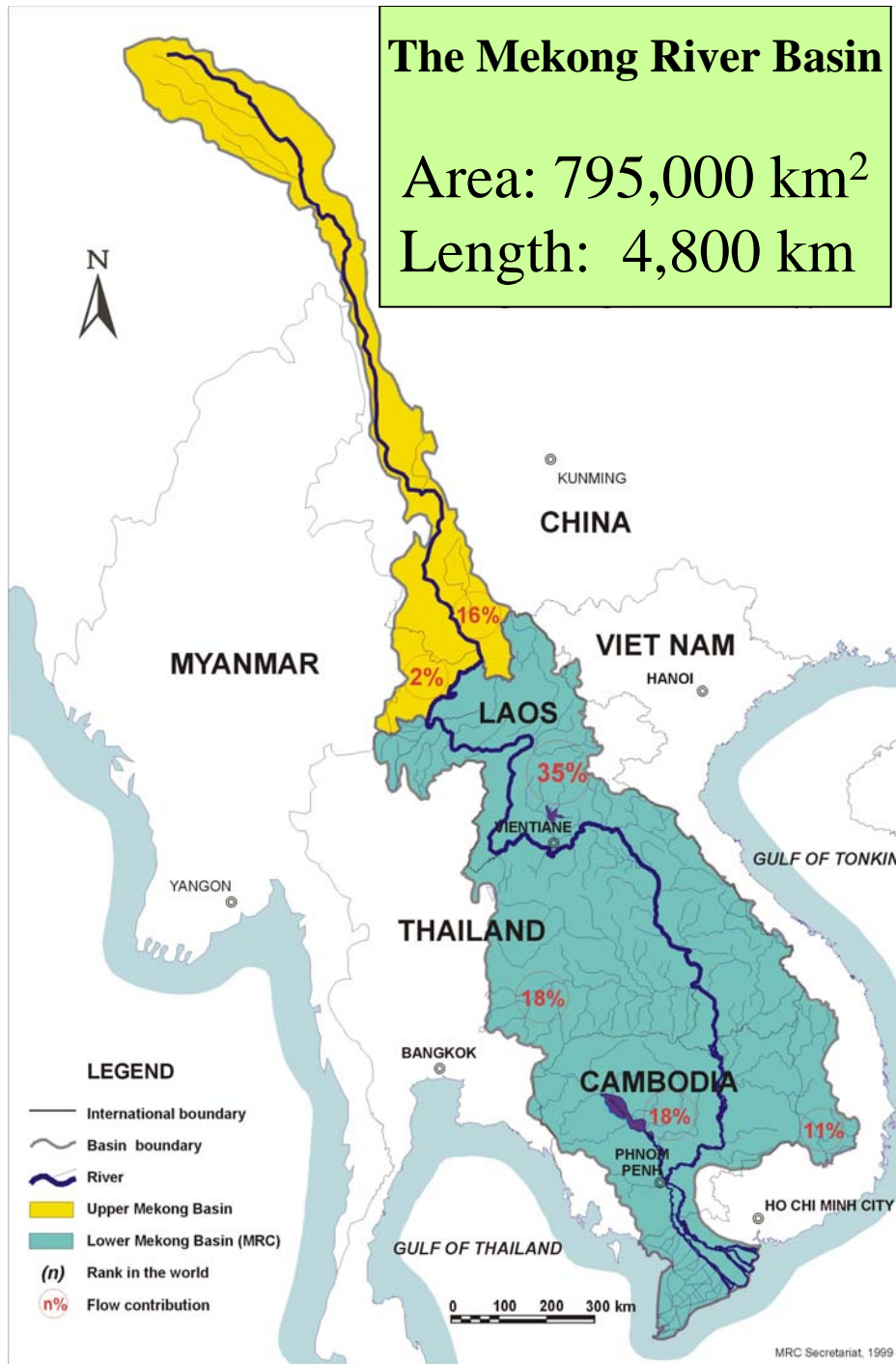
Large river basins in the world

Top 50

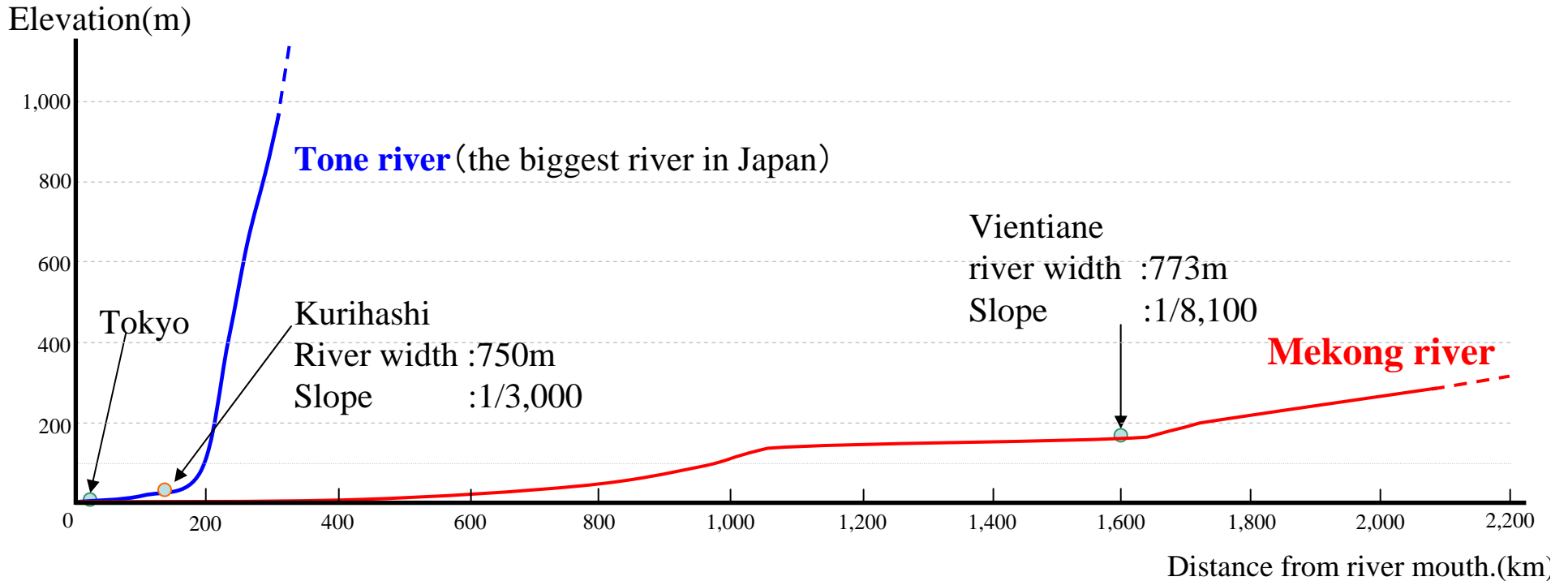


The Mekong river basin is 21st largest.

The length of the Mekong is 12th longest.



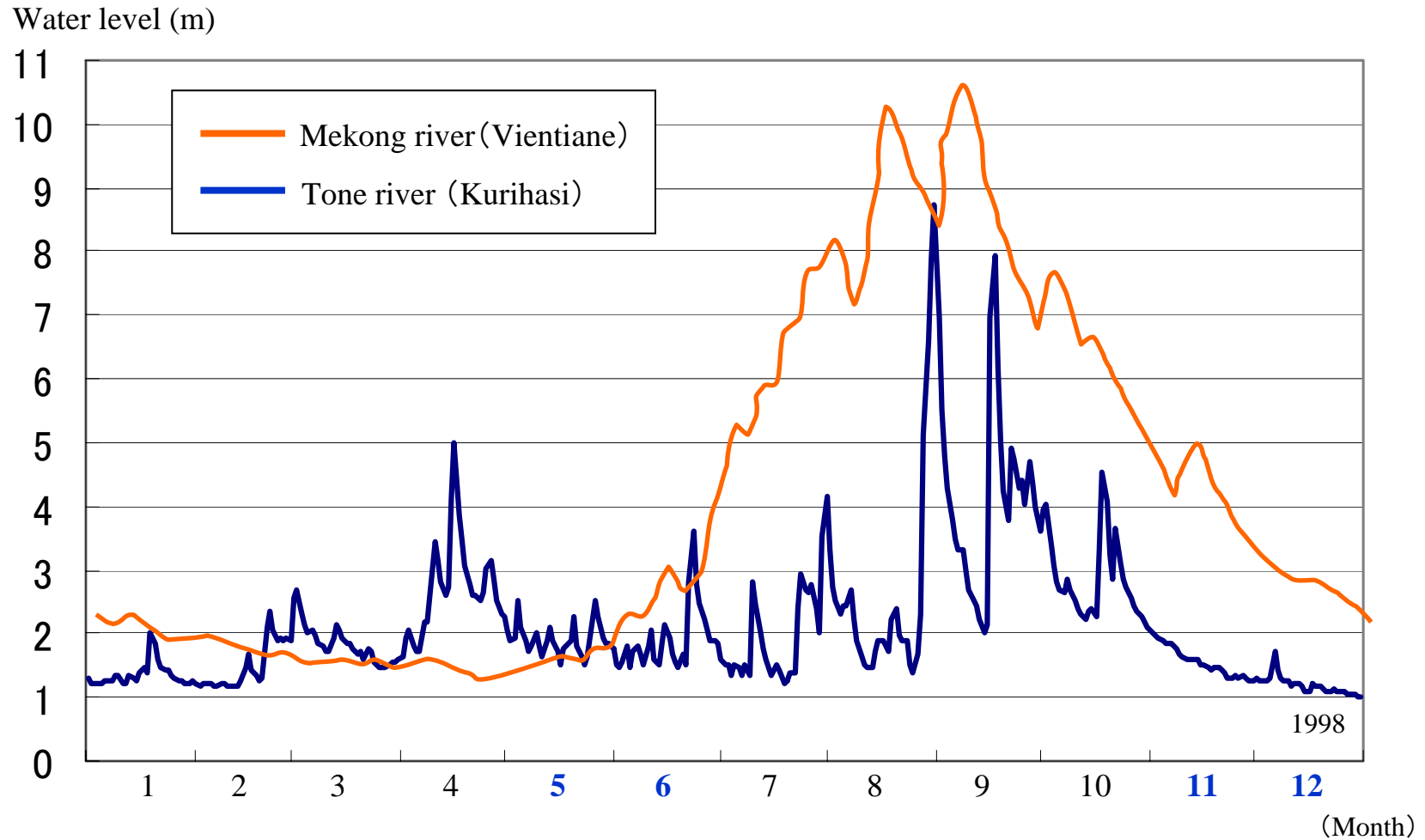
Comparison of the river slope between the Mekong river and the Tone river

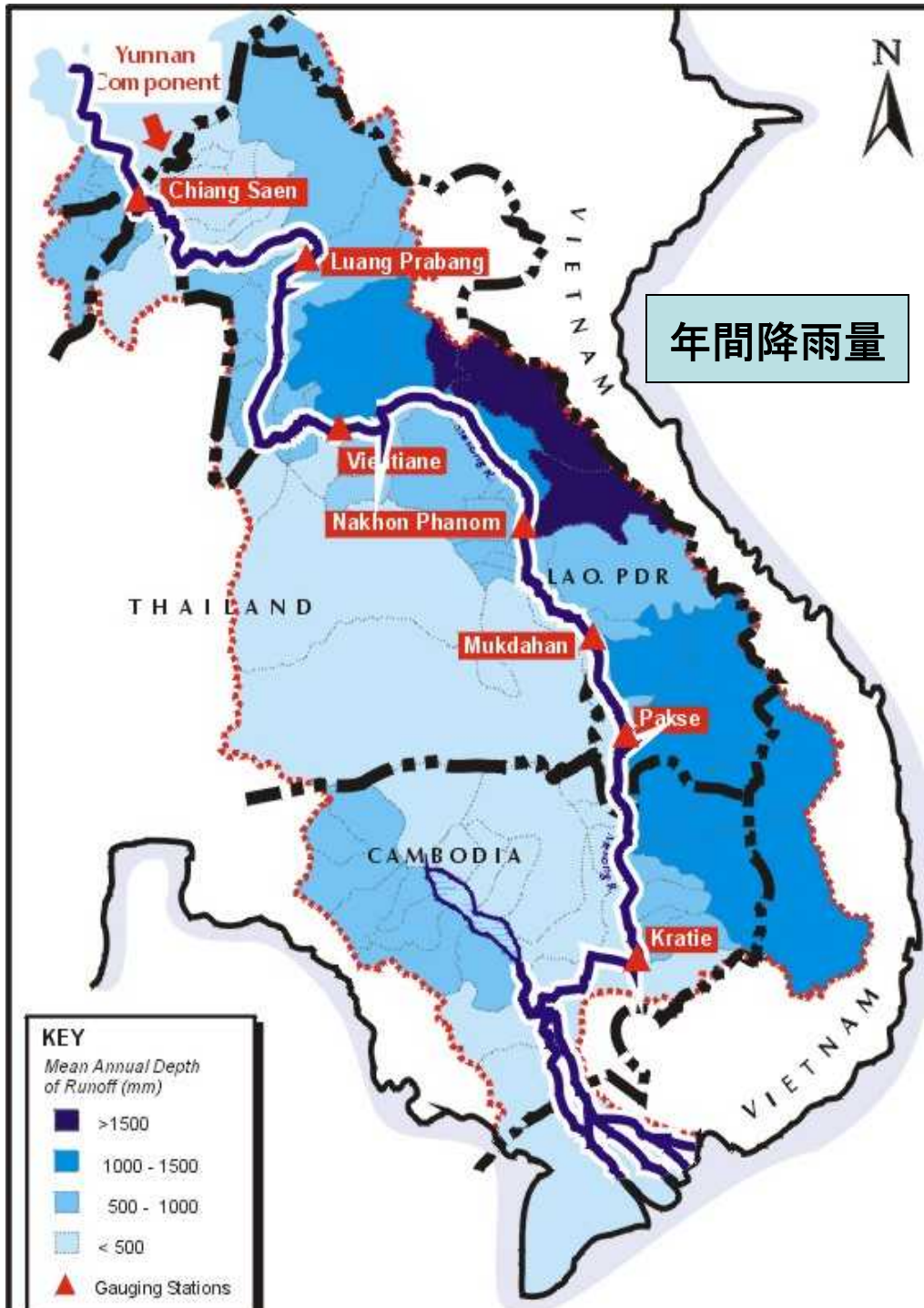


	Mekong river	Tone river
Length	4,800km	322km (1/15)
Elevation of the highest waterhead	4,968m	1,834m (1/3)
Contributory area	795,500km ²	16,840km ² (1/47)

Difference of the change of the river water level

A flood appears many times in a year in Japanese river.





Flow contribution

(流域国別の流量比率)

China – 16%

Myanmar – 2%

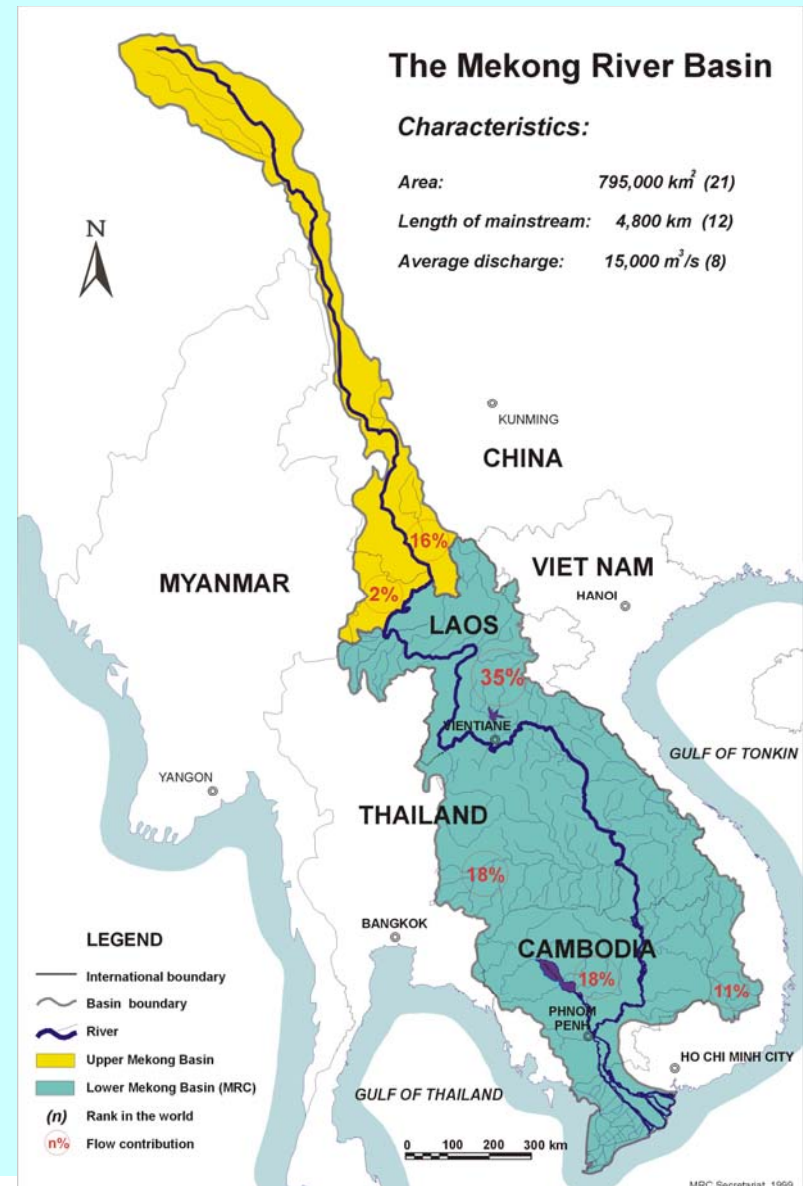
Laos – 35%

Thailand – 18%

Vietnam – 11%

Cambodia – 18%

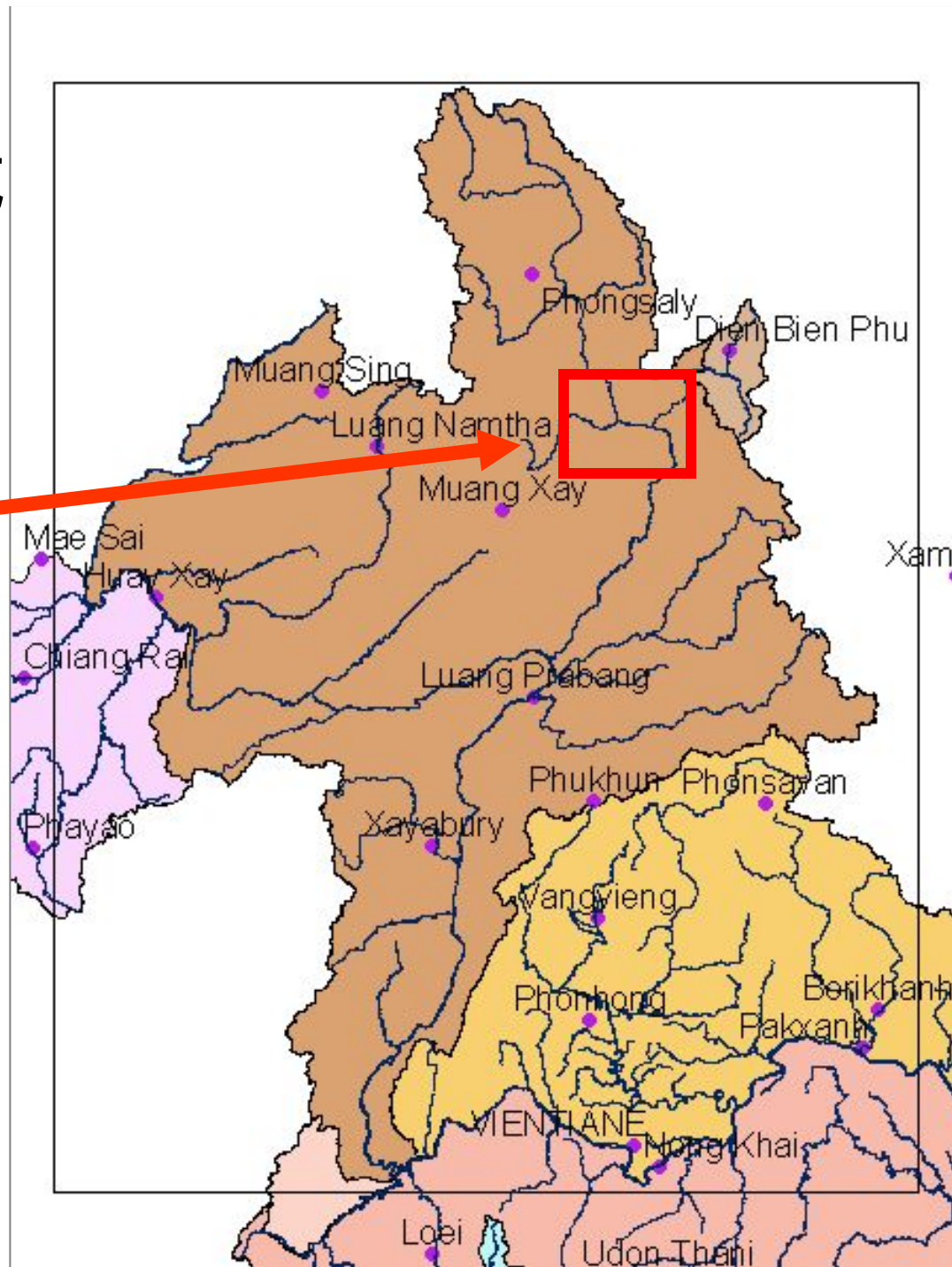
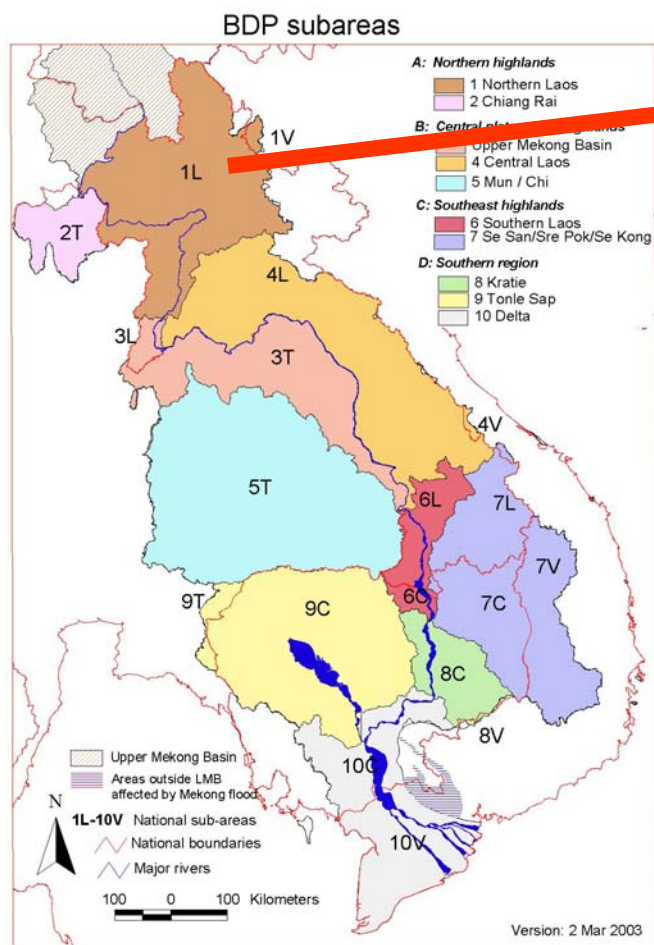
メコン河の外観

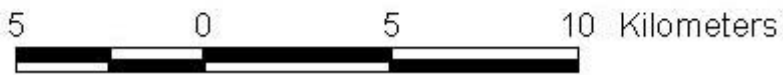


上流中国（ Lancang river）

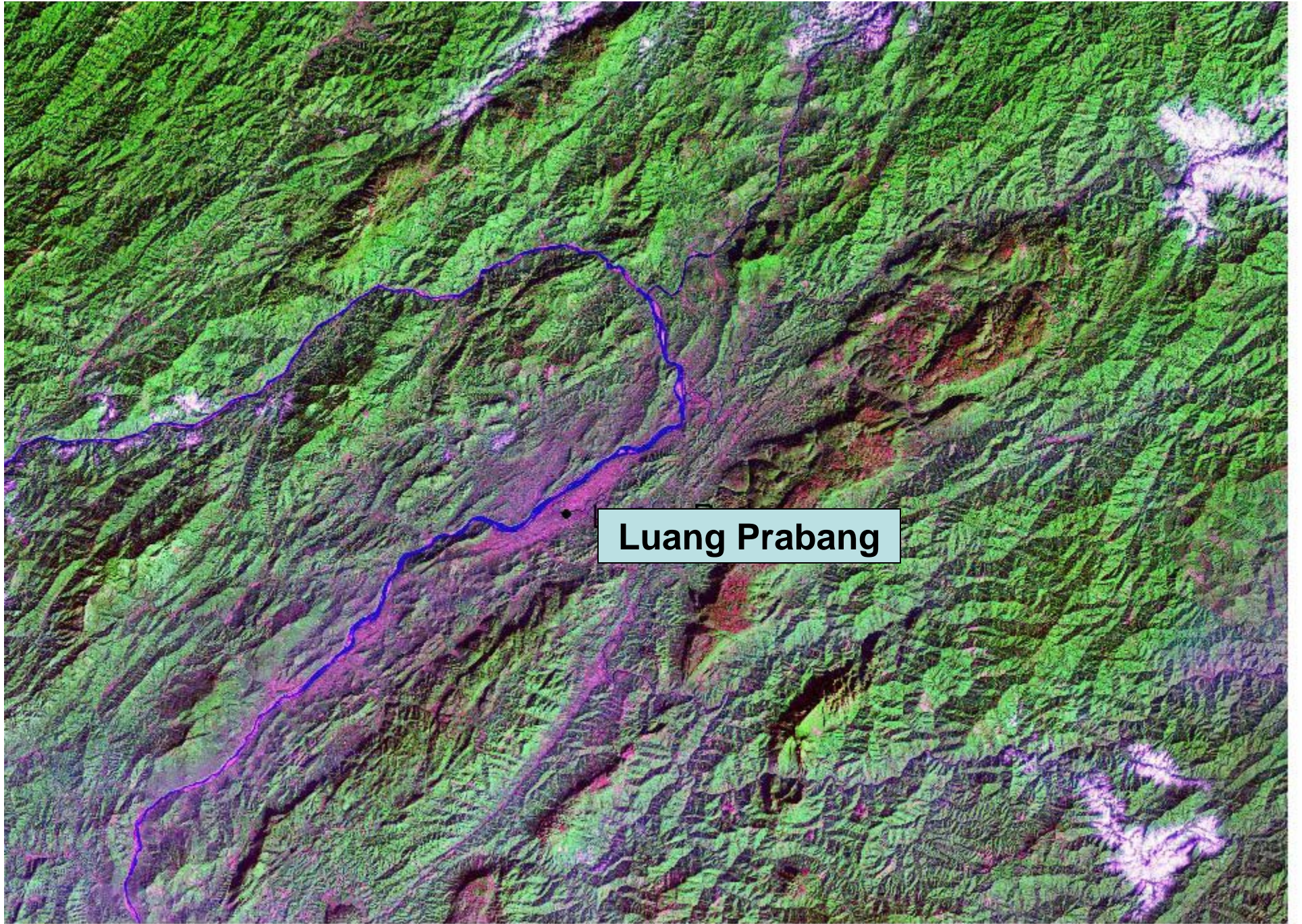


北部ラオスの支川流域





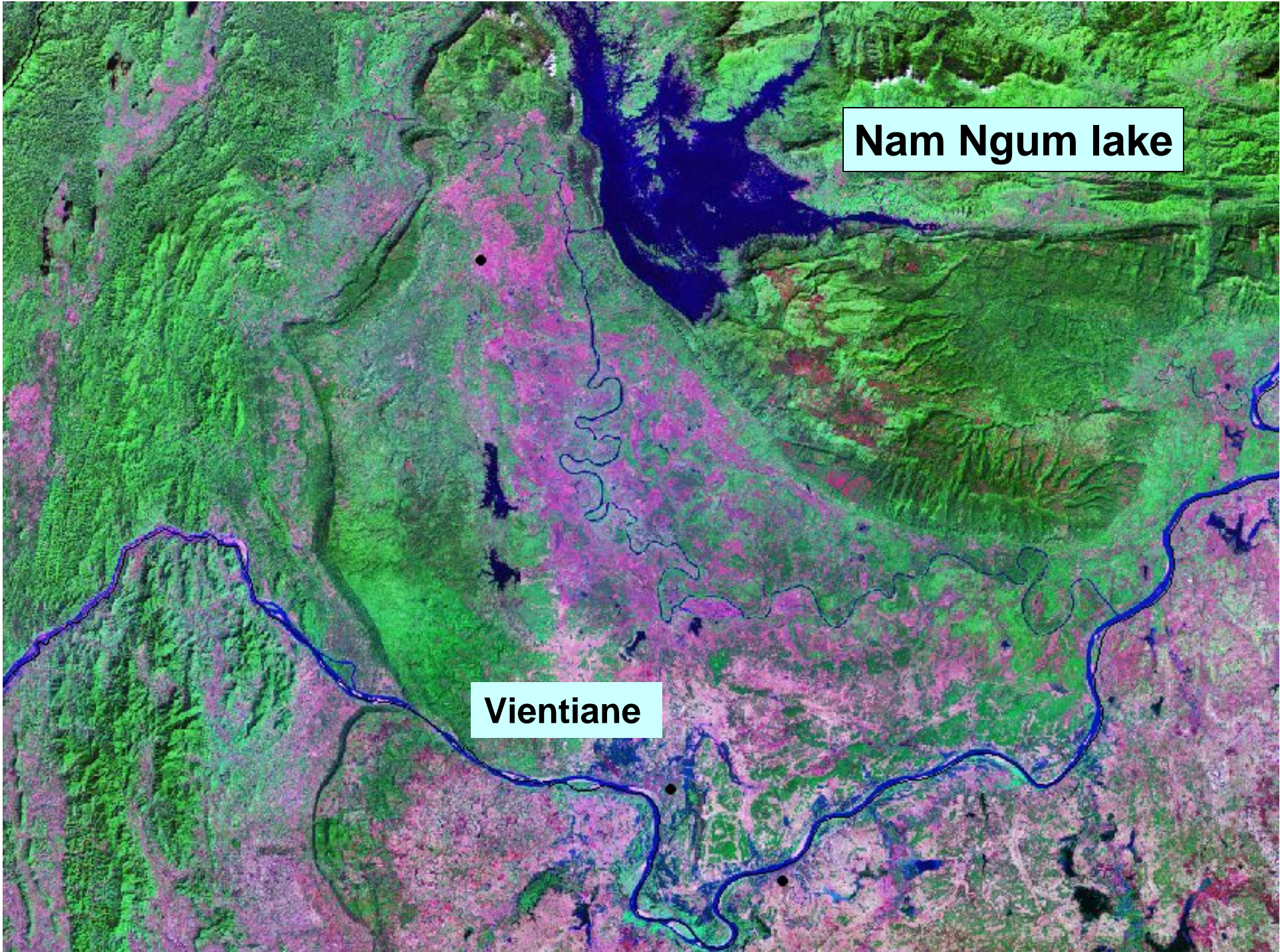
Nam Ou and Nam Pak,



Luang Prabang

0 10 Kilometers

Luang Prabang region



Nam Ngum lake

Vientiane

ナムトゥン2ダムサイト

Lak Sao

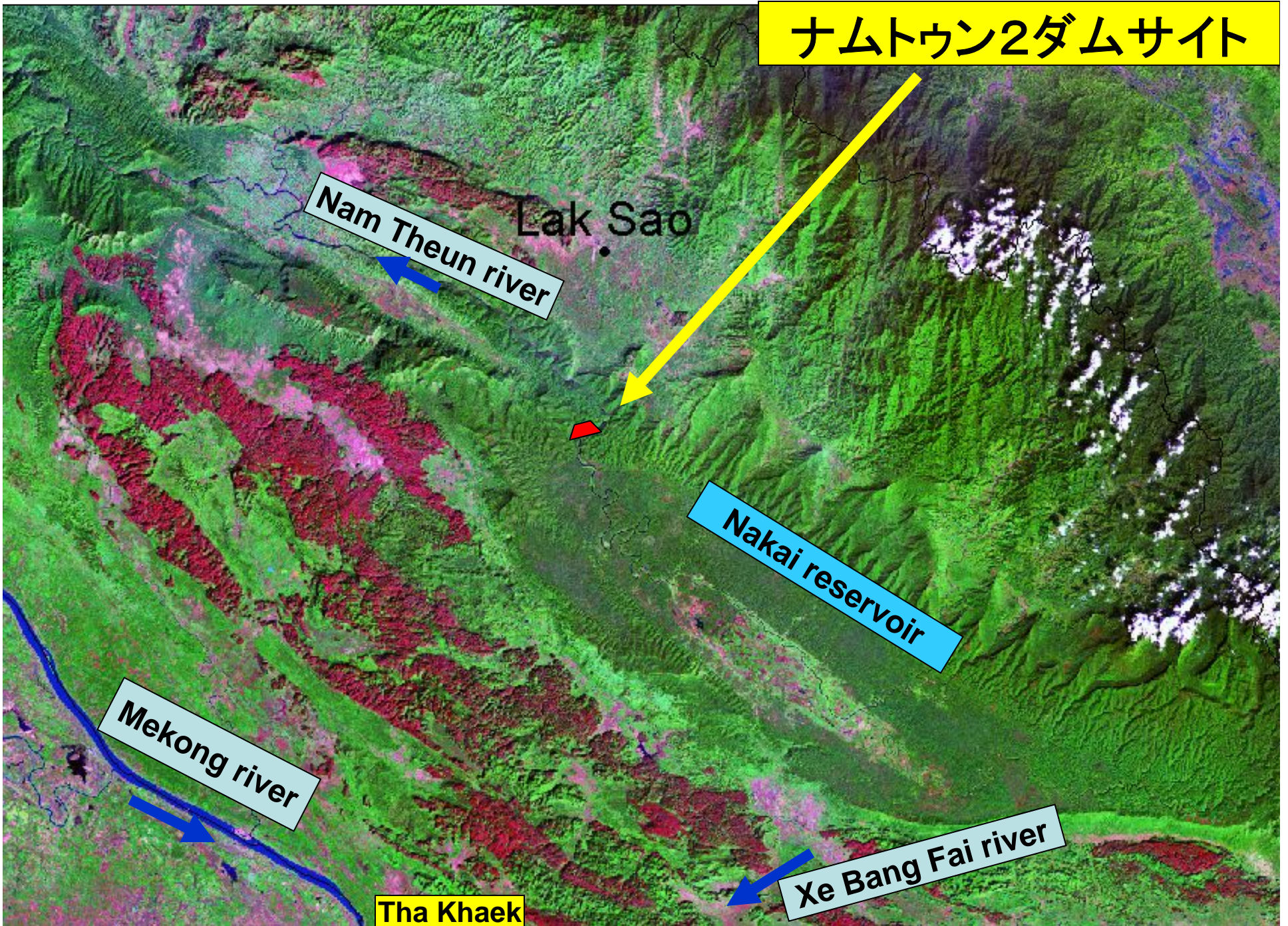
Nam Theun river

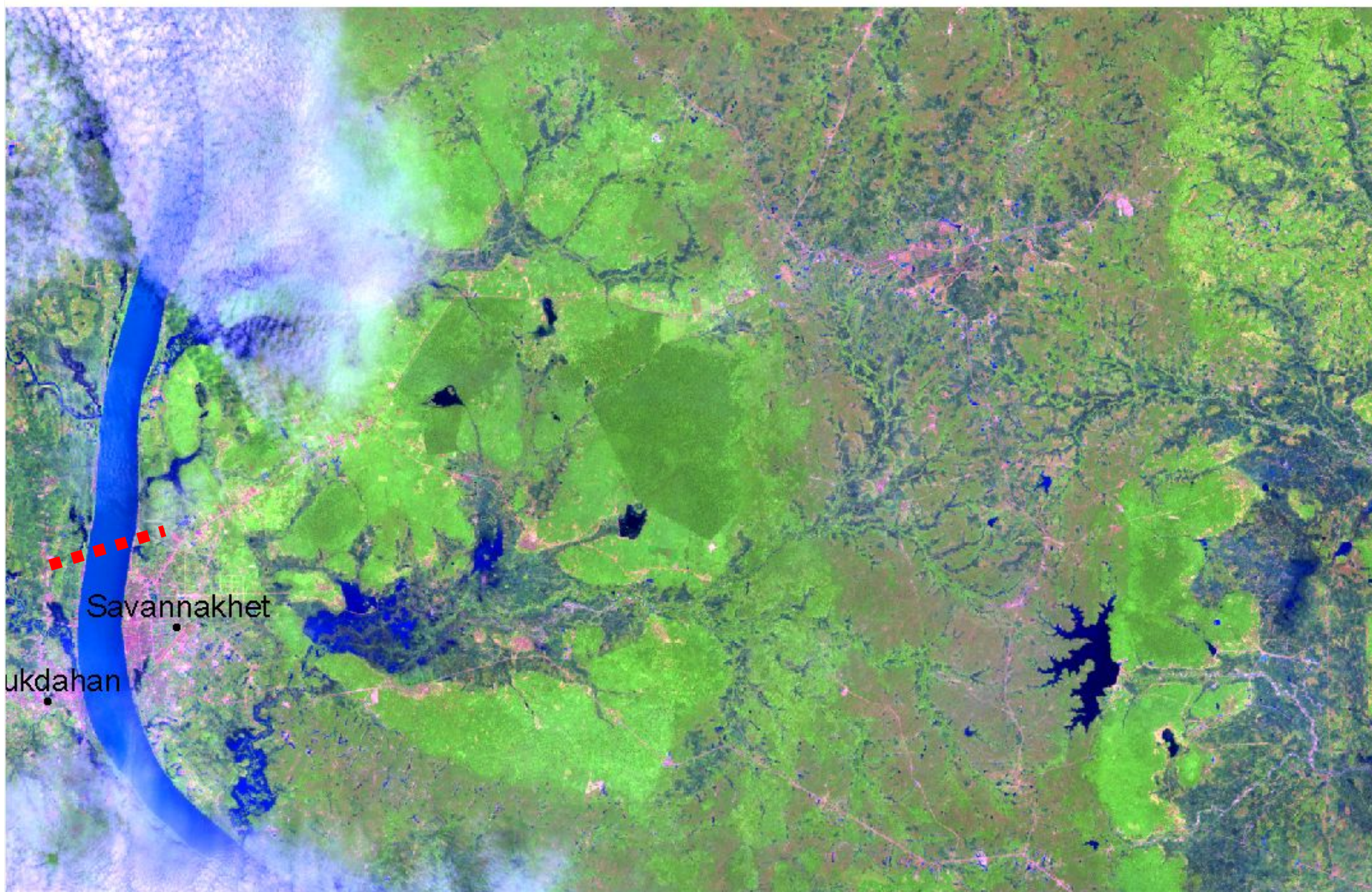
Nakai reservoir

Mekong river

Xe Bang Fai river

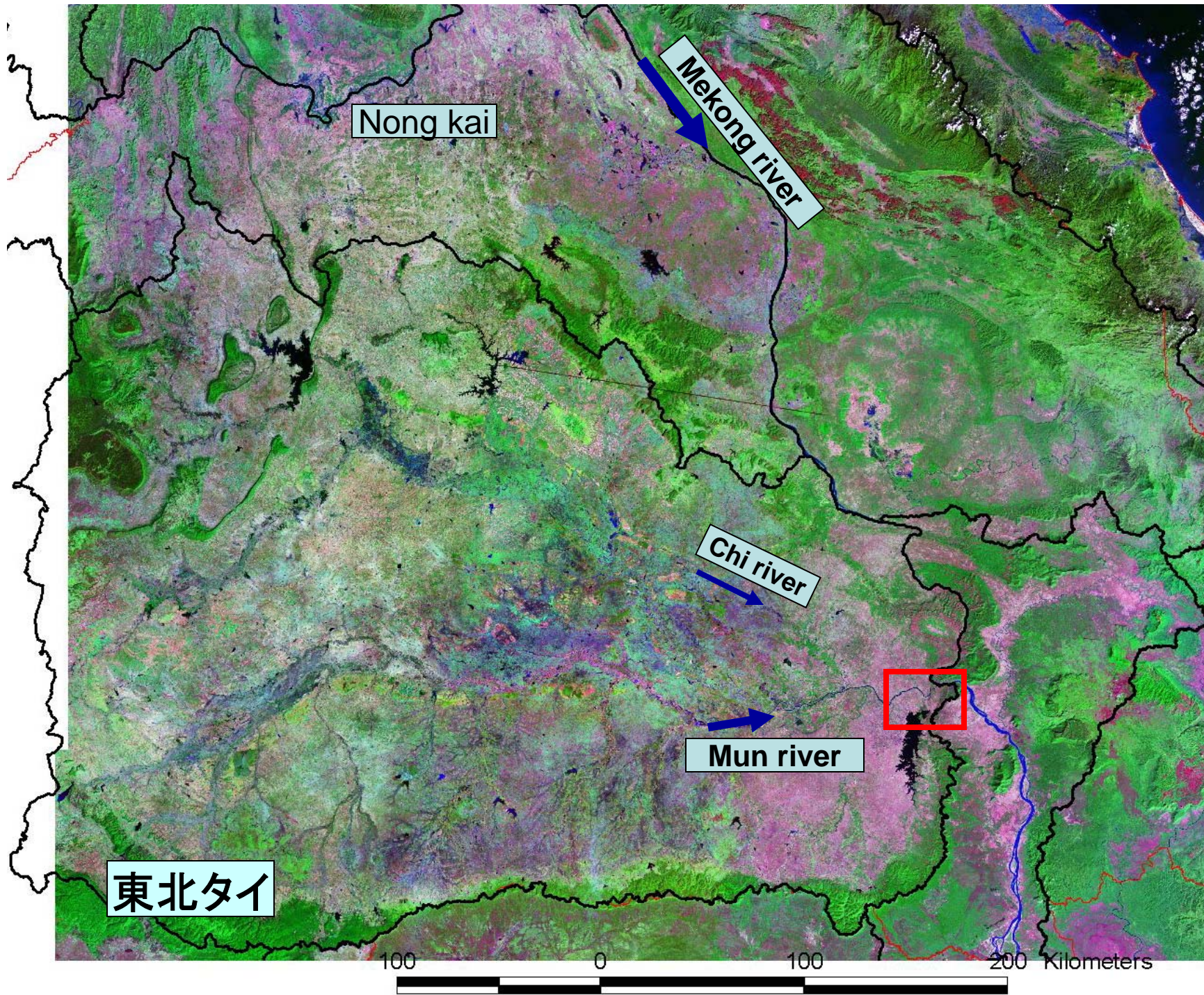
Tha Khaek





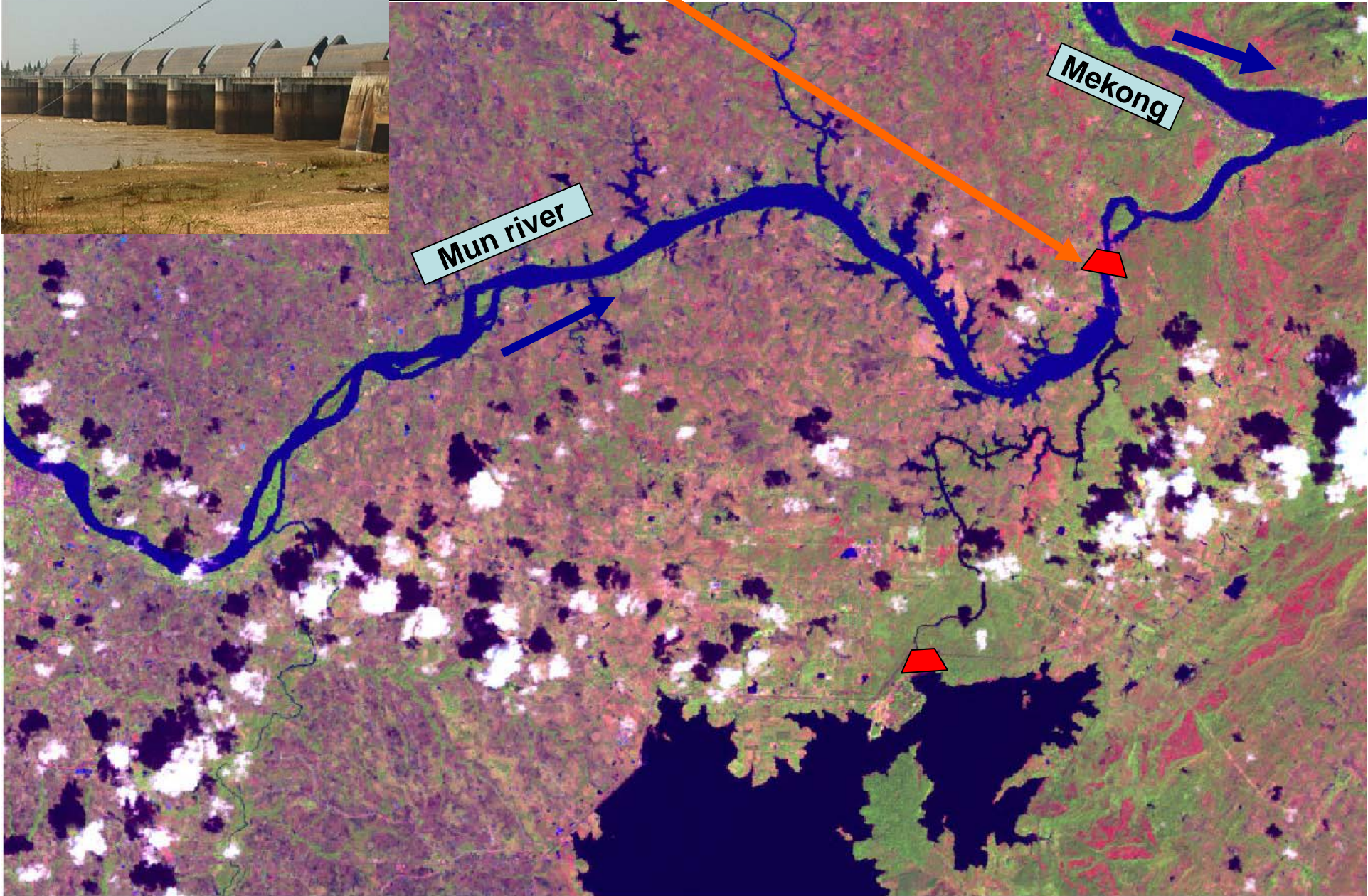
4 0 4 8 Kilometers

Savannakhet 1999



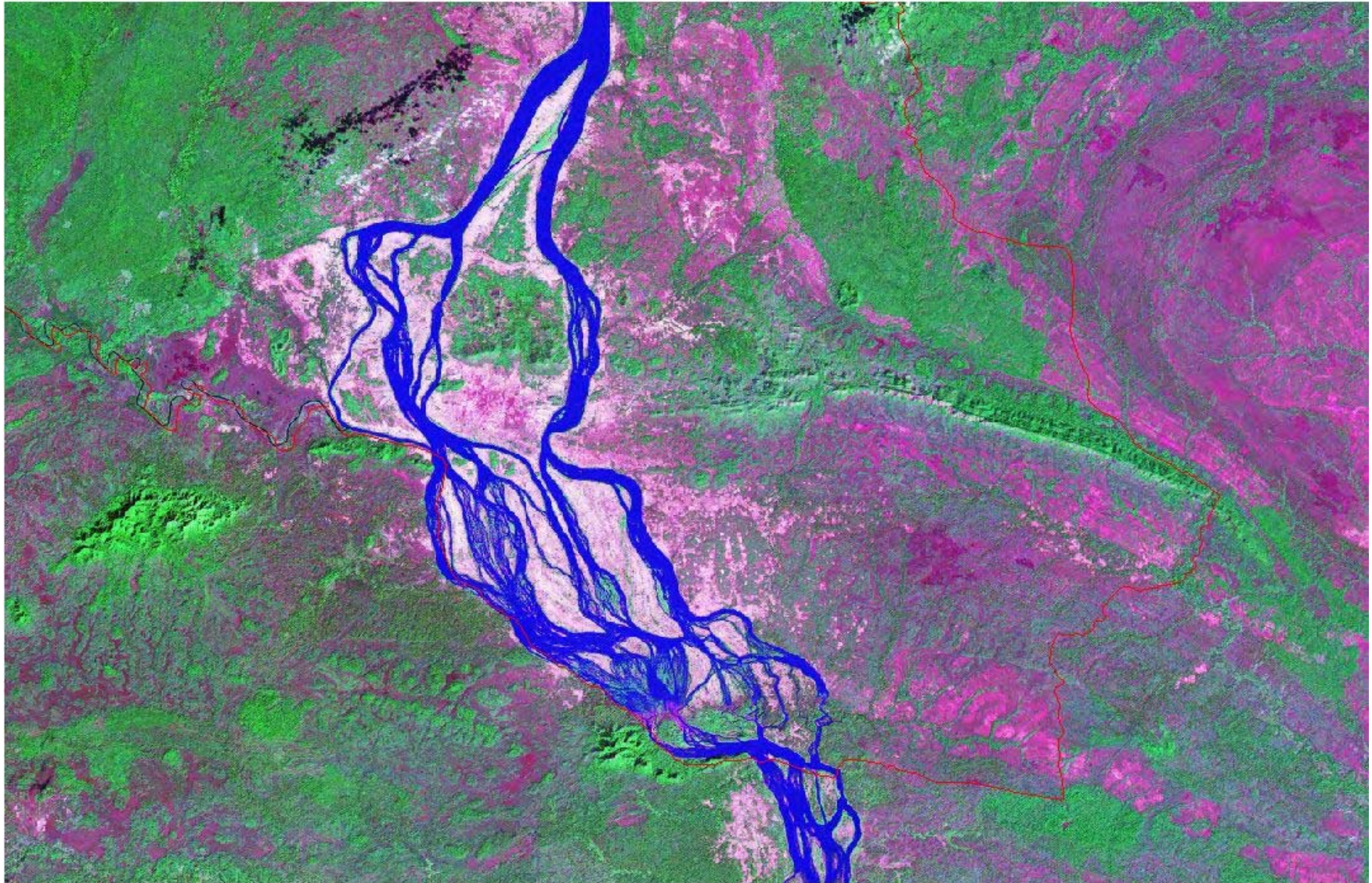


Pak Mun dam



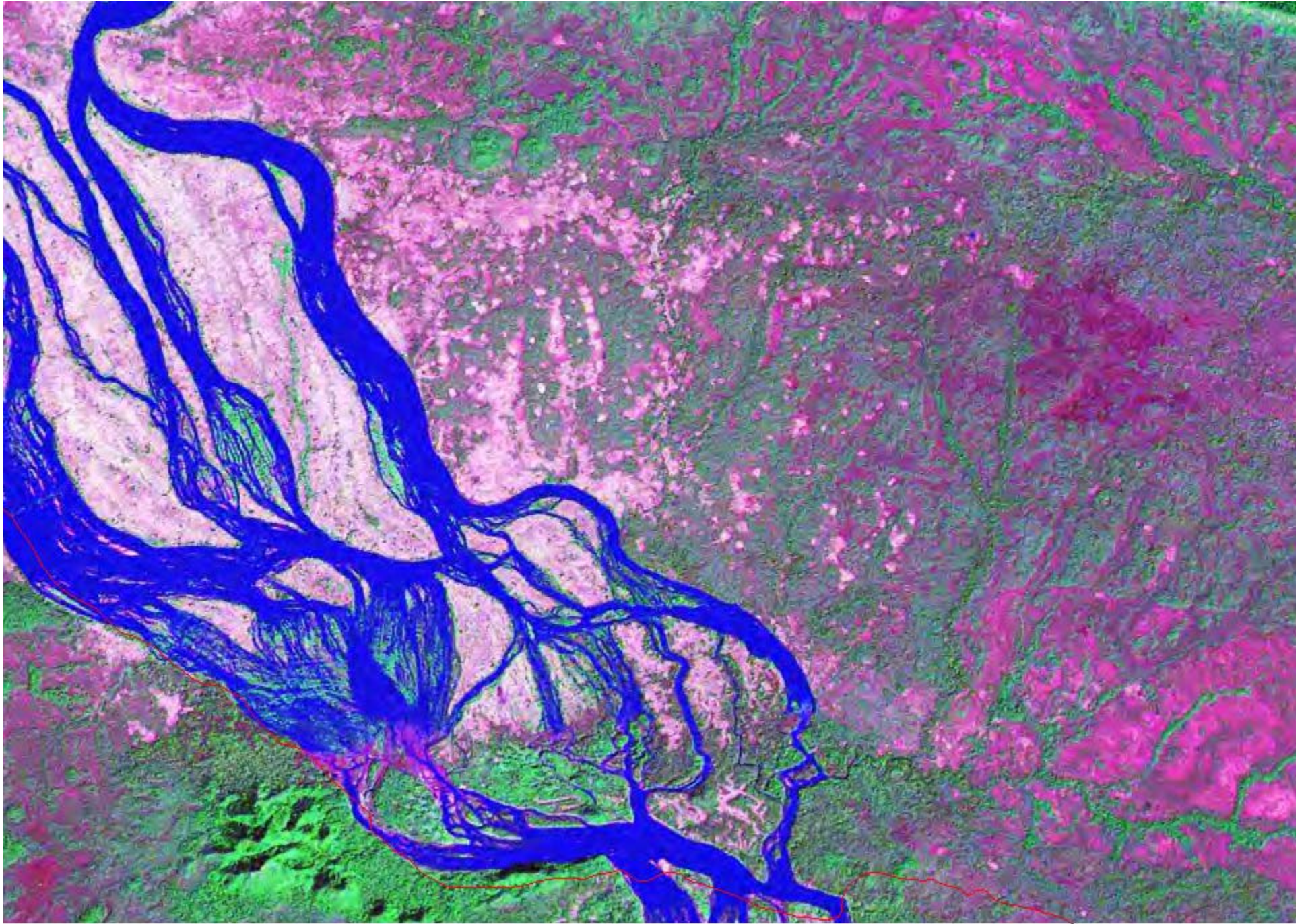
Sirinthorn Reservoir and Pak Mun Dam





10 0 10 20 Kilometers

Khone Falls, southern Lao PDR



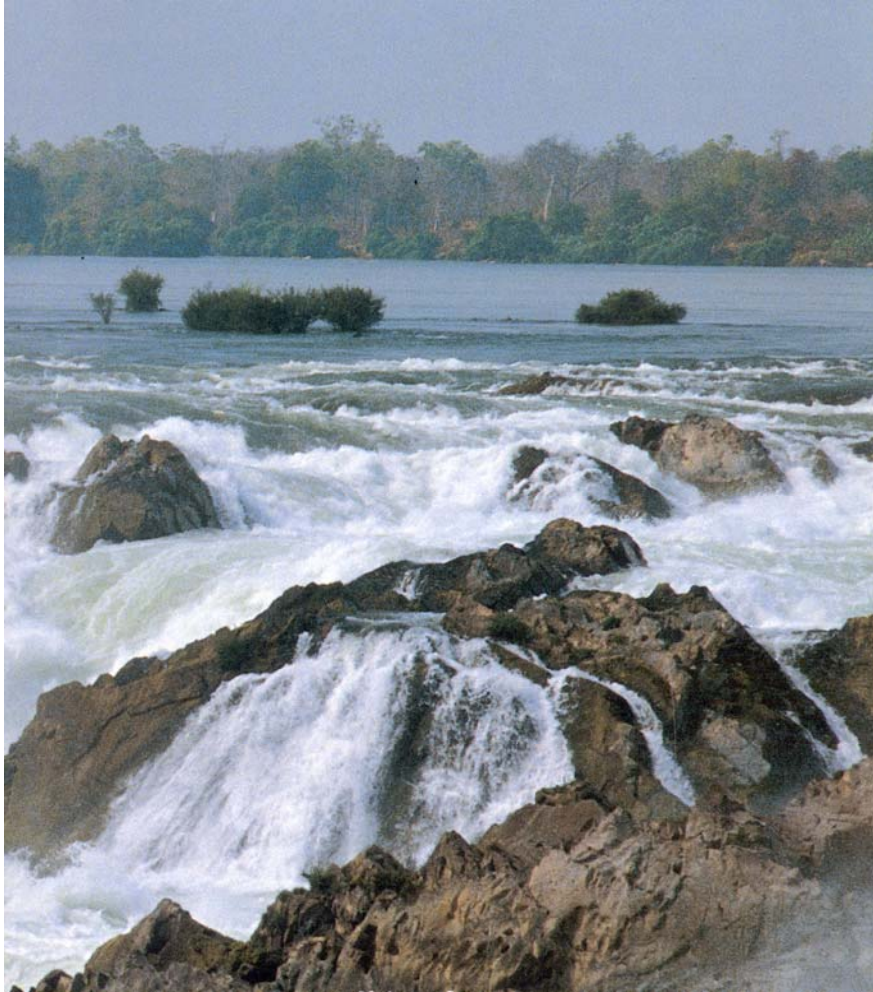
0

3

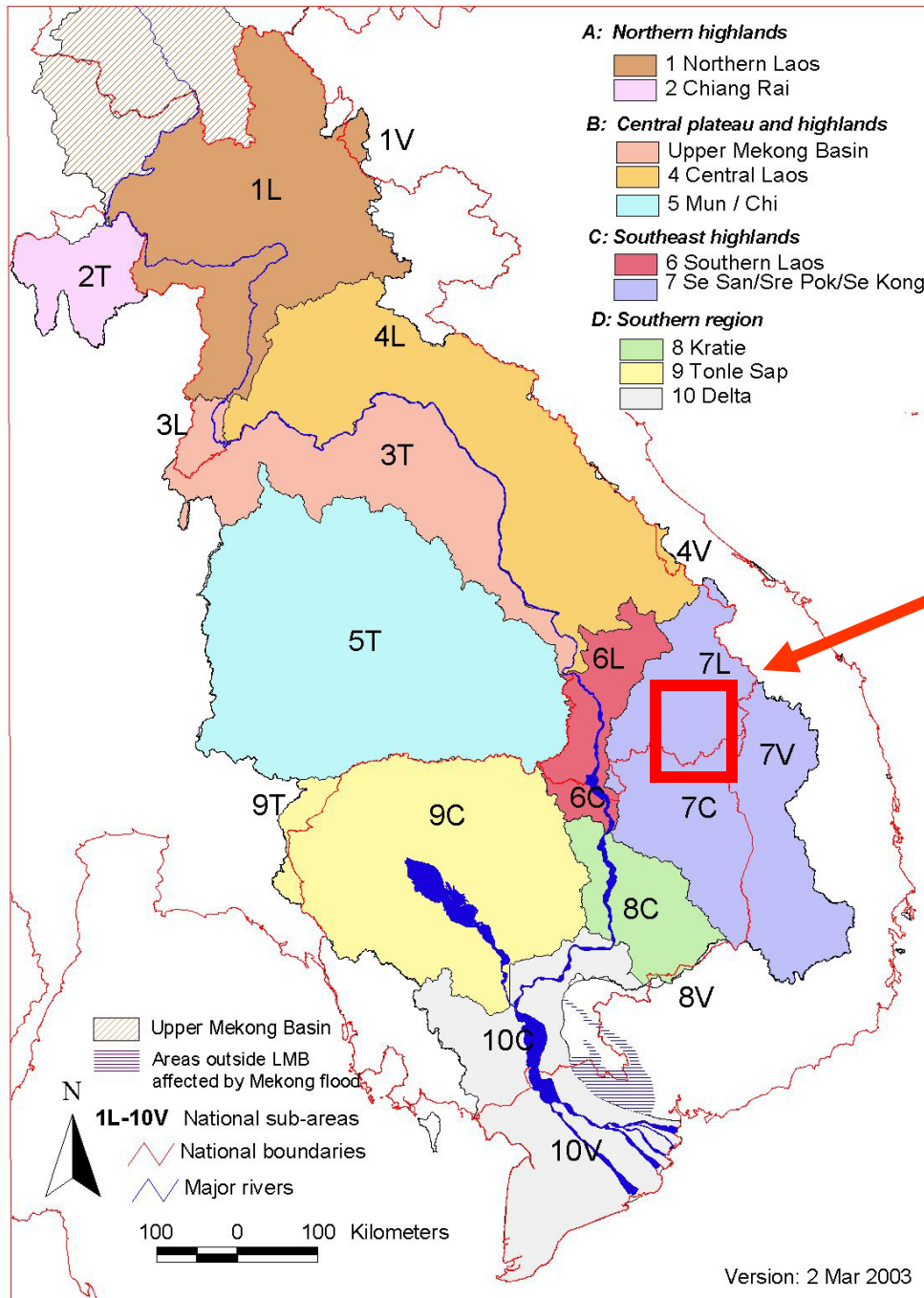
6 Kilometers

Khong Felle southern Laos DDD

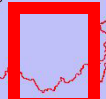
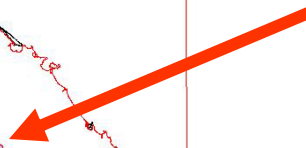


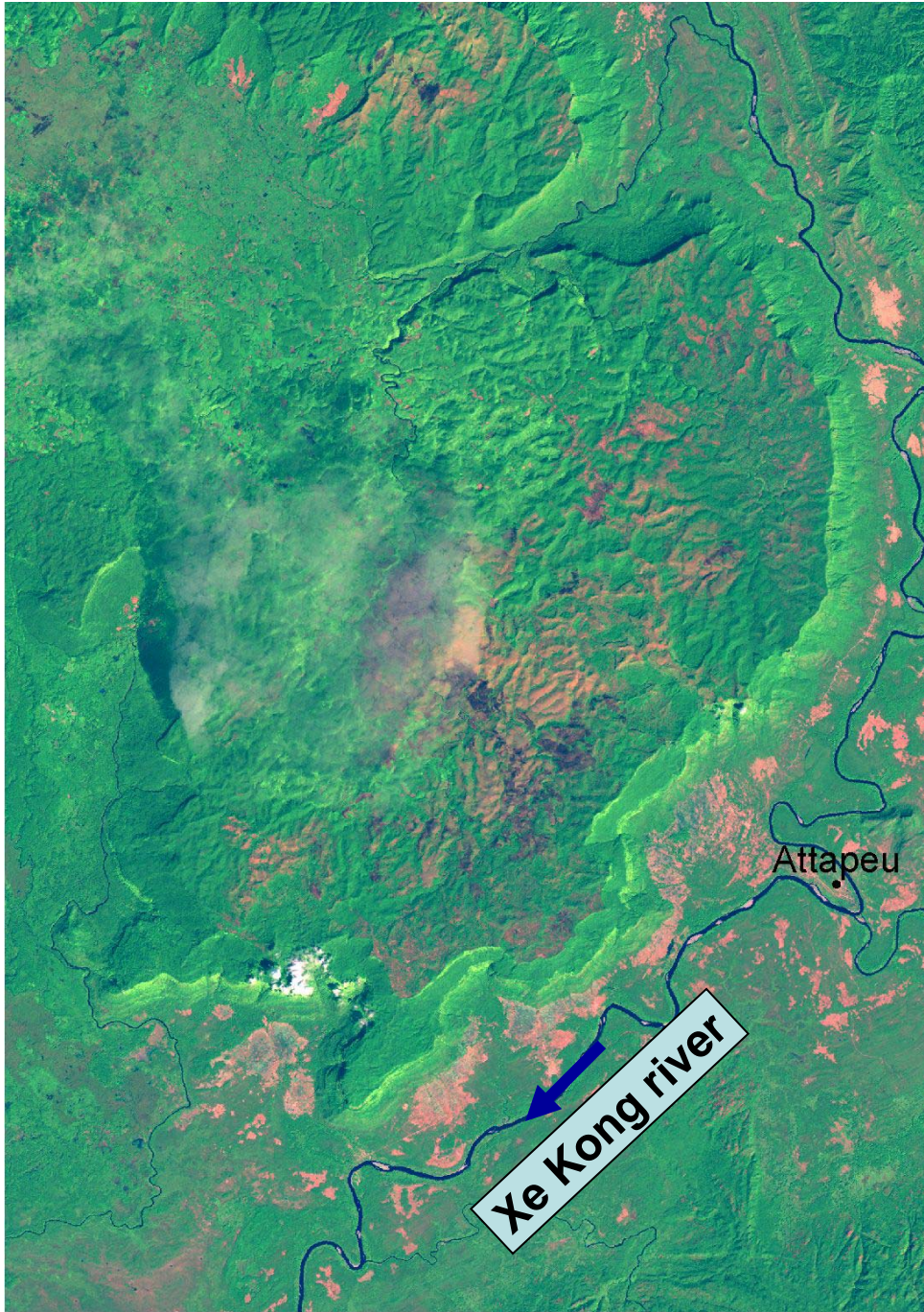


BDP subareas



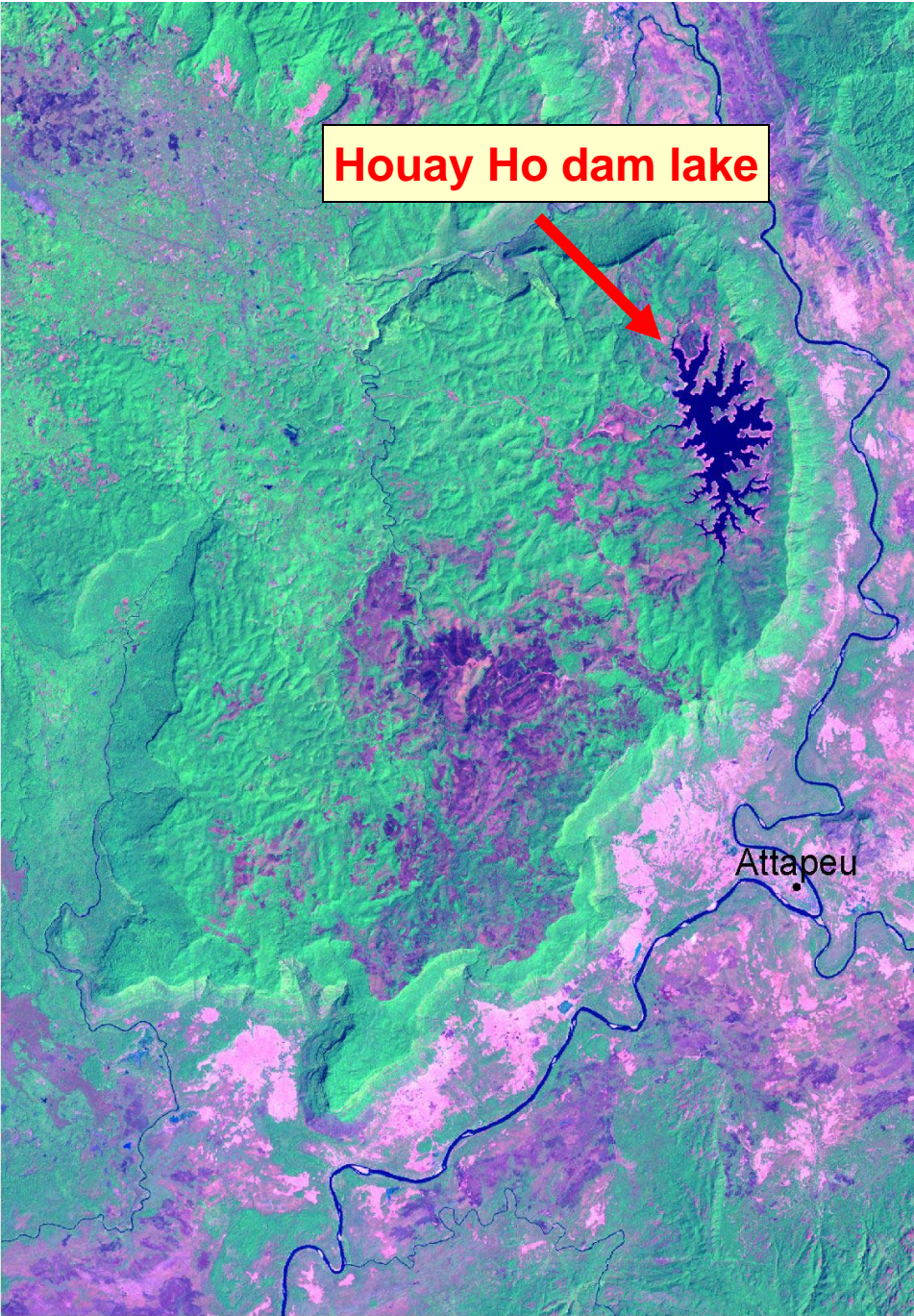
セコン川
(ラオス→カンボジア)





3 0 3 6 Kilometers

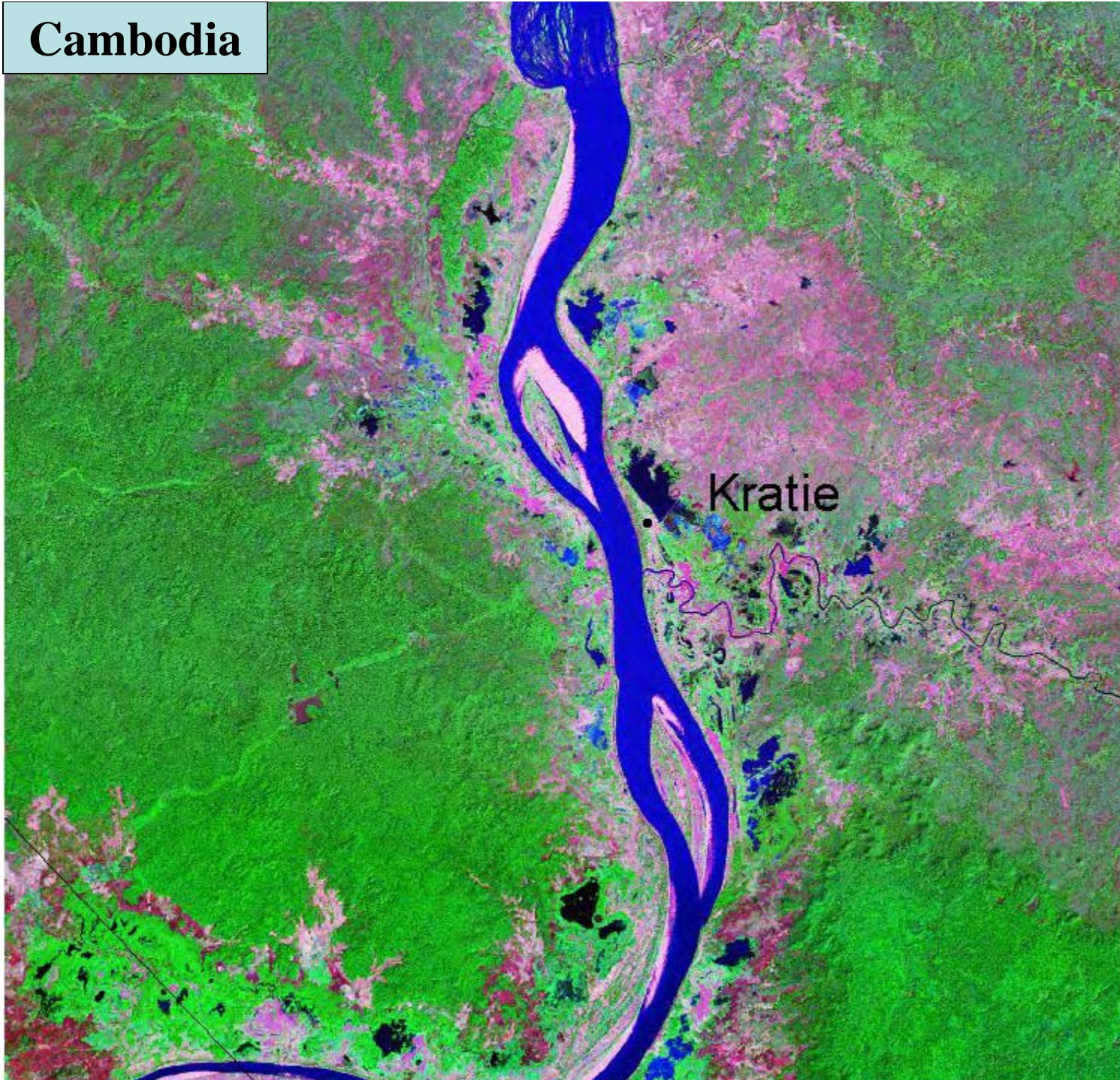
Attapeu 1992

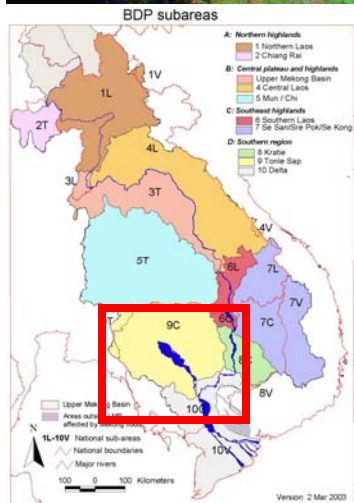
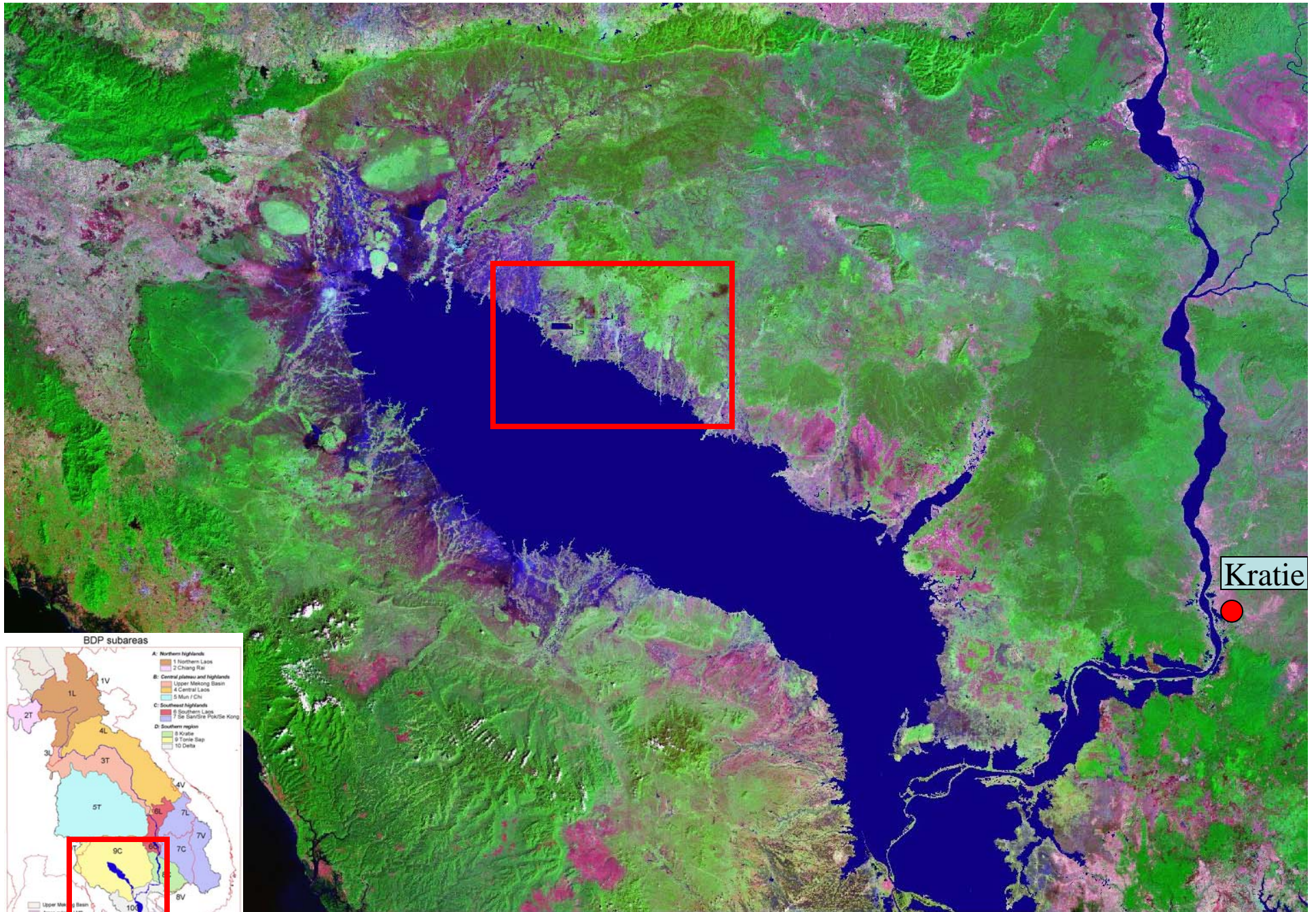


3 0 3 6 Kilometers

Attapeu 2002

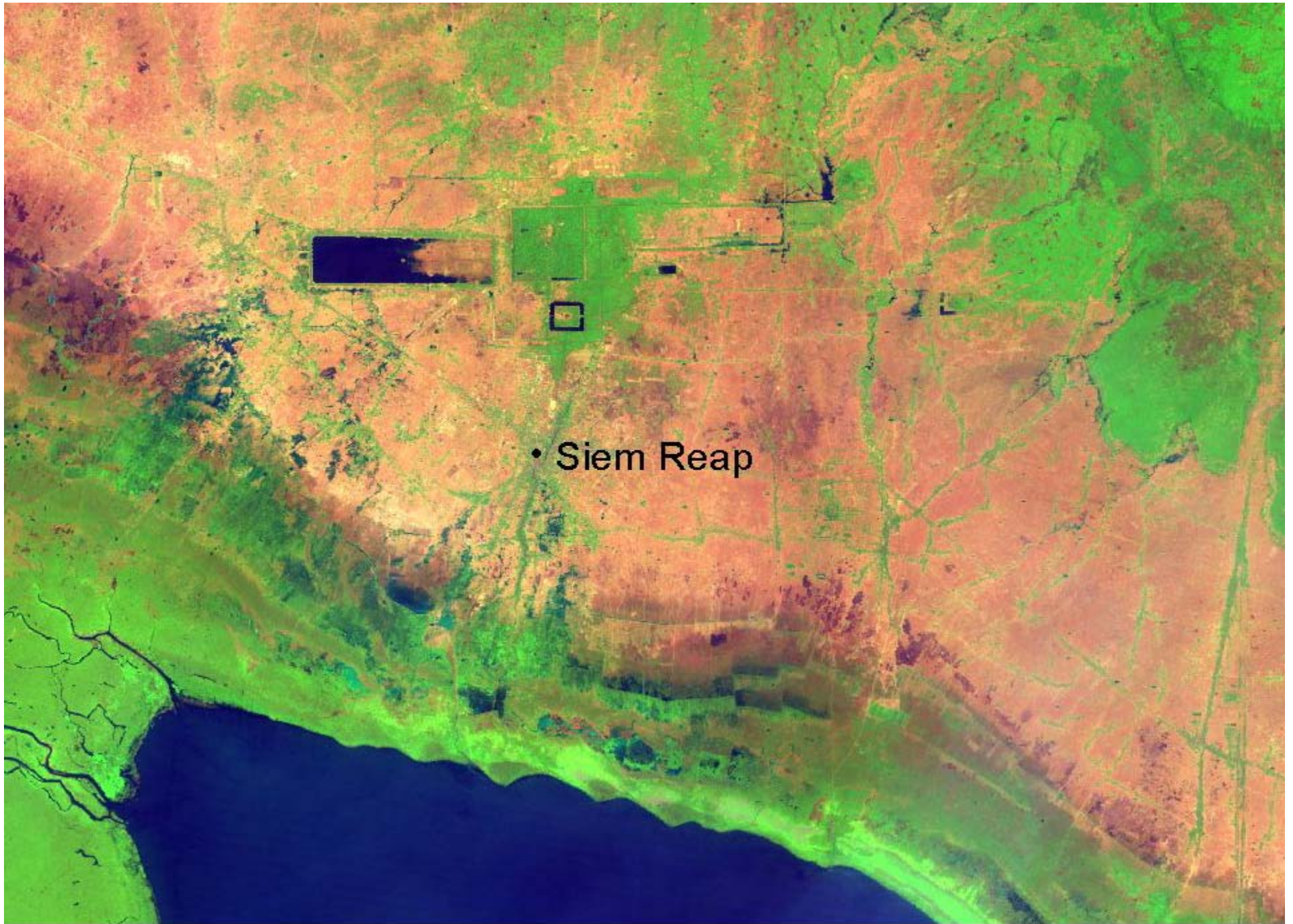
Cambodia





Kilometers

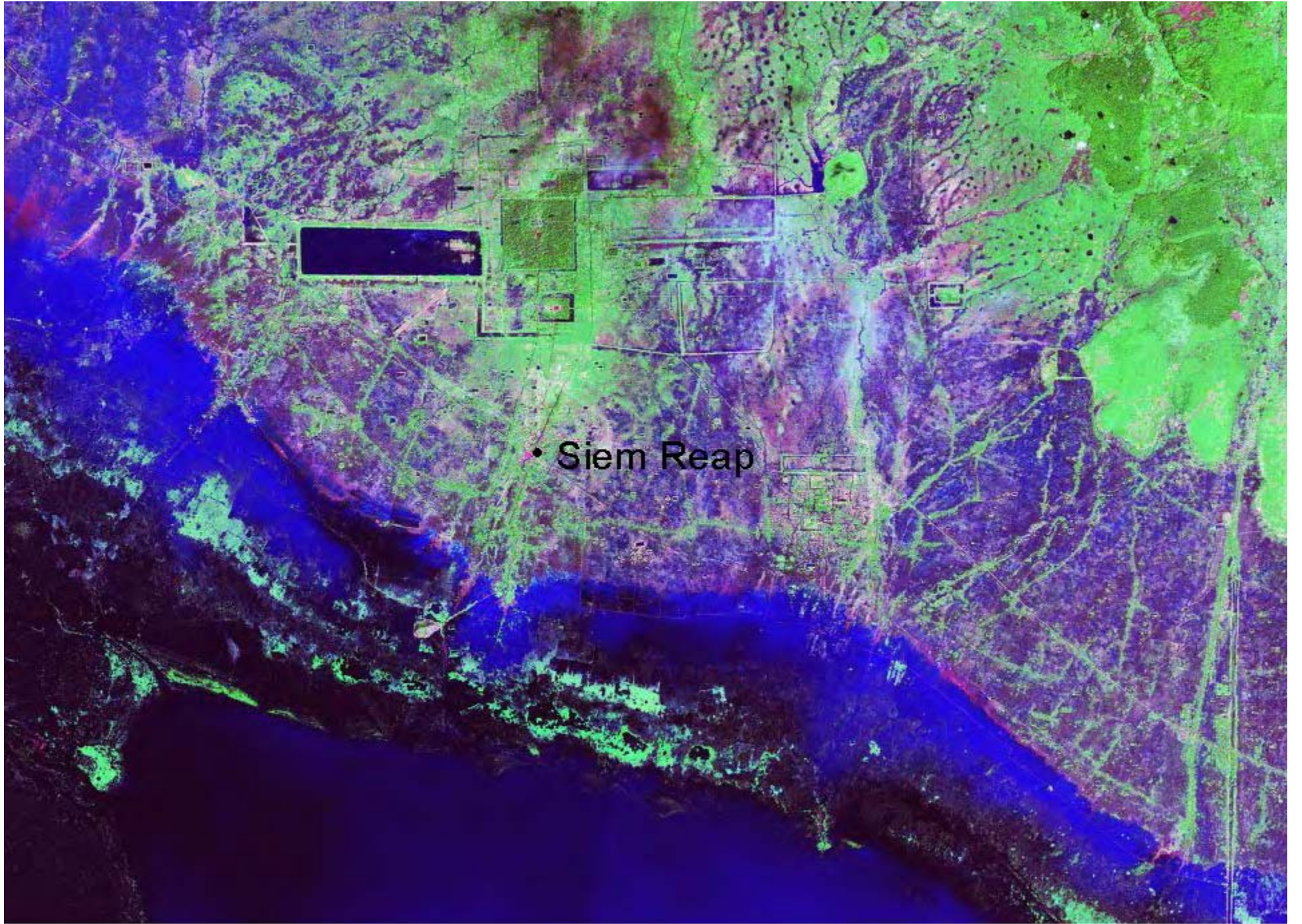
Great Lake - Sept 2000 flood



• Siem Reap

0 5 10 Kilometers

Siem Reap - dry season



• Siem Reap

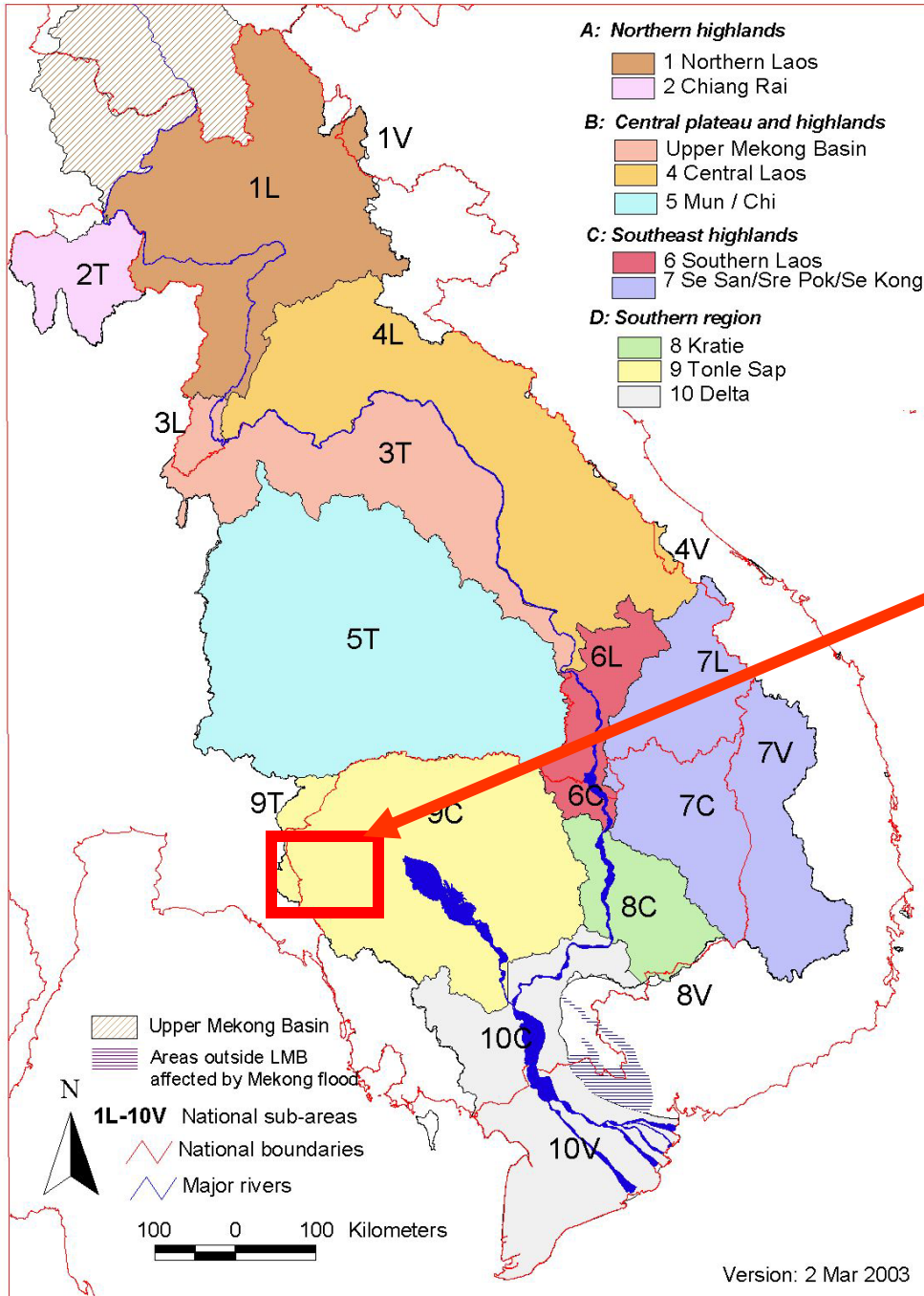
0 5 10 Kilometers

Siem Reap - wet season



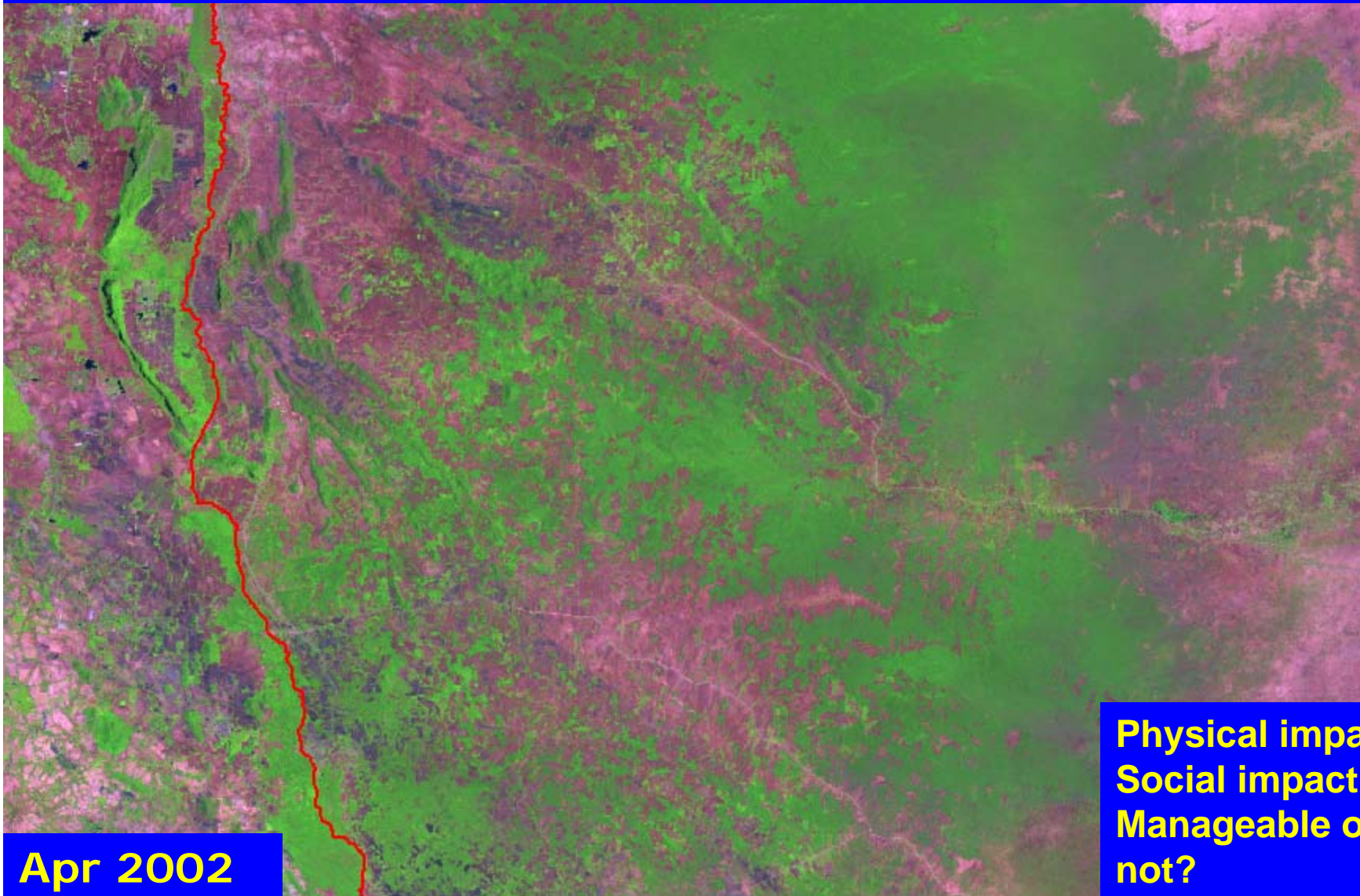
トンレサップ湖の冠水林

BDP subareas



タイ・カンボジア国境
(トンレサップ湖上流域)

Land Use Change near the Cambodia-Thai Border

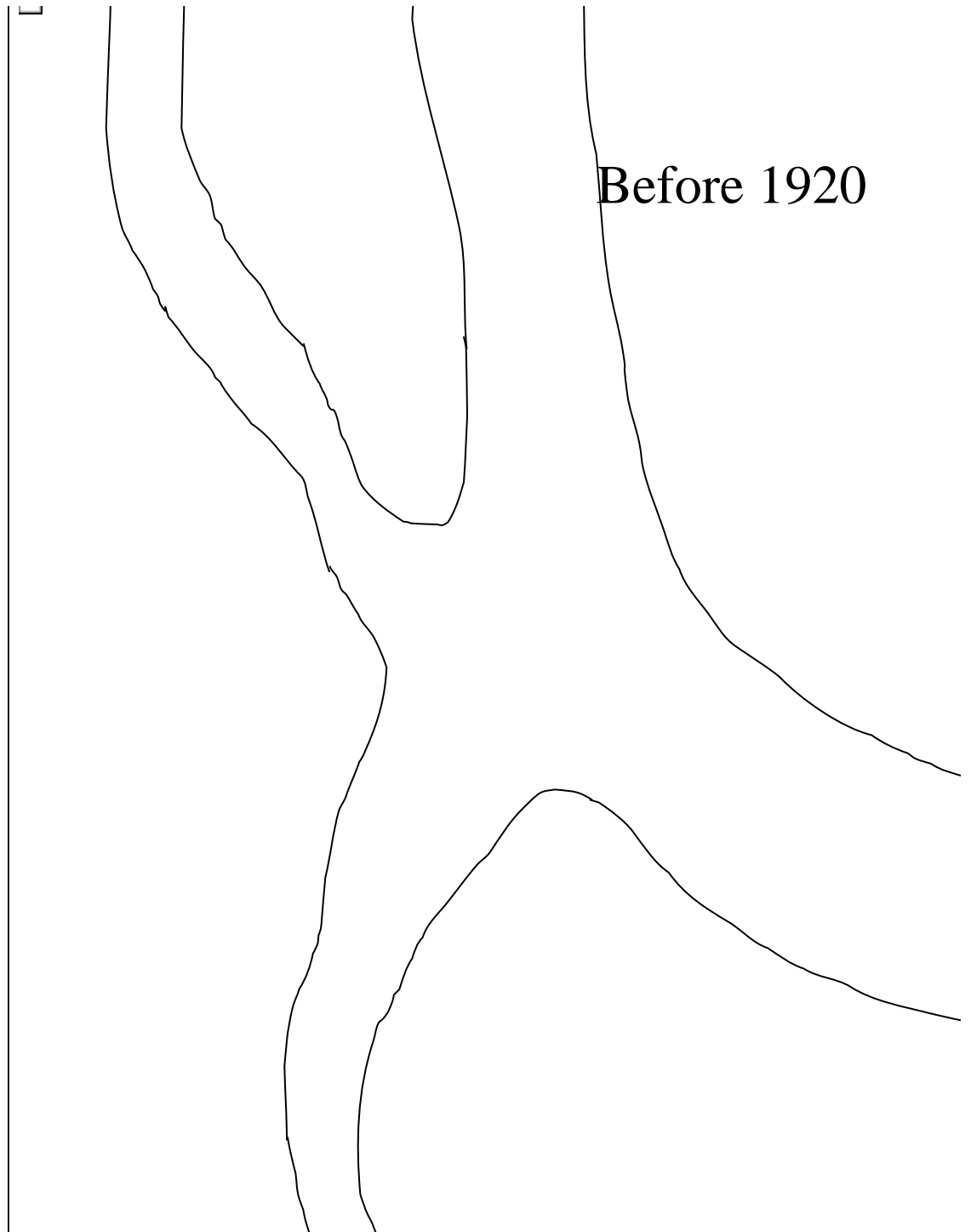


Apr 2002

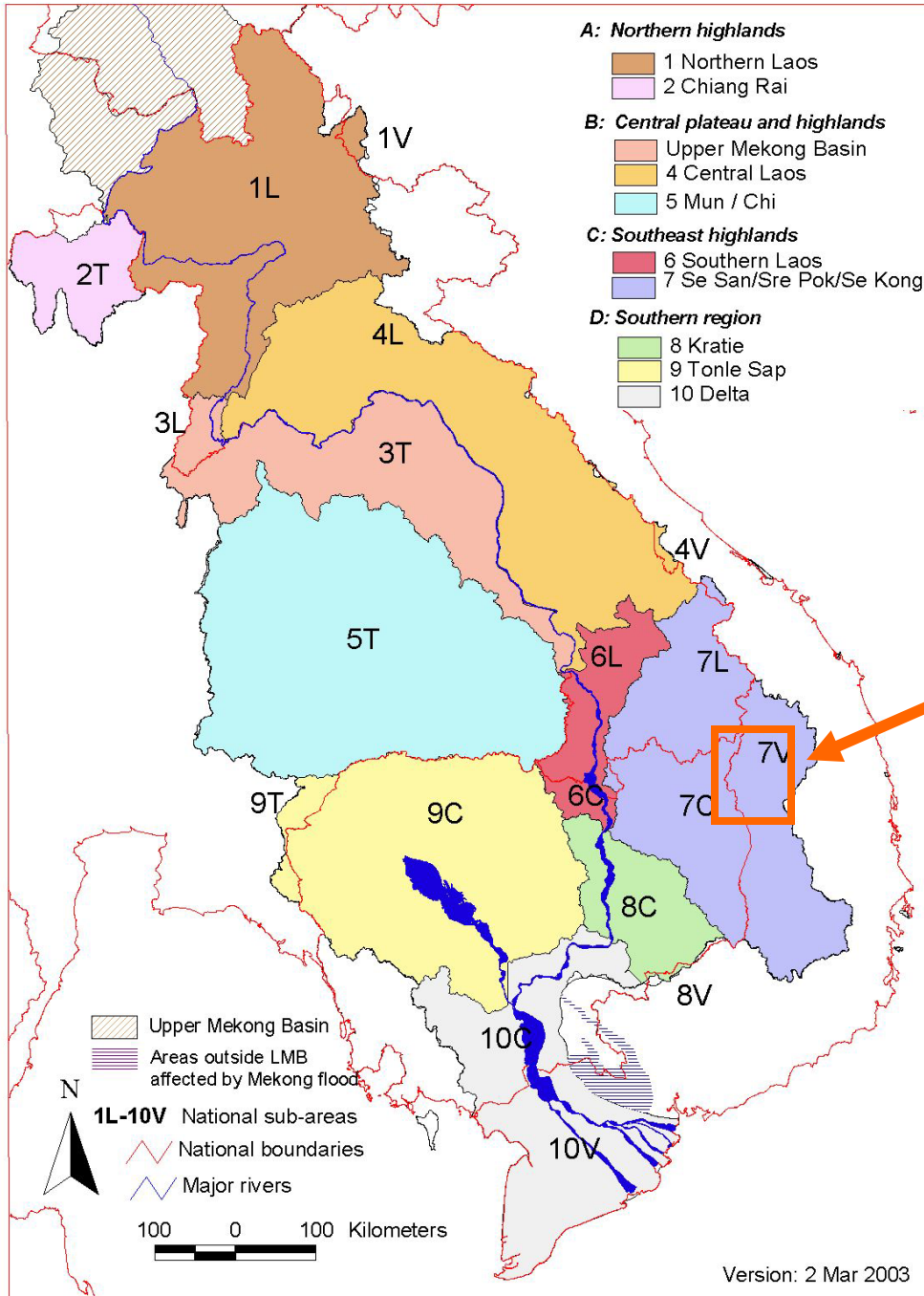
Physical impact?
Social impact?
Manageable or
not?

**Phnom Penh
Chaktomuk Area**

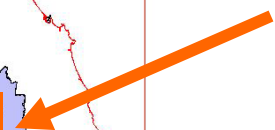
Aerial Photo 2001



BDP subareas



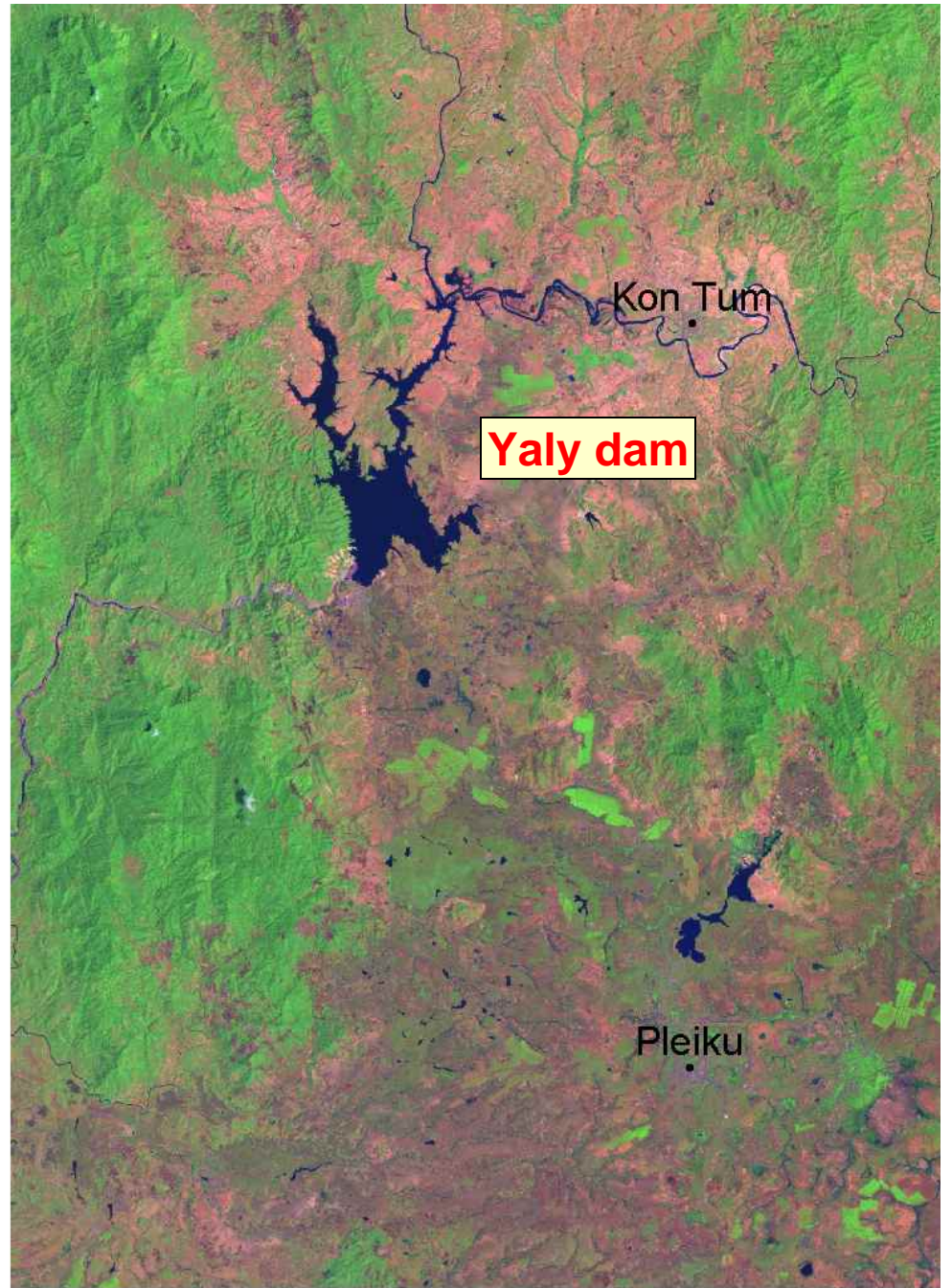
セサン川
(ベトナム→カンボジア)





4 0 4 8 Kilometers

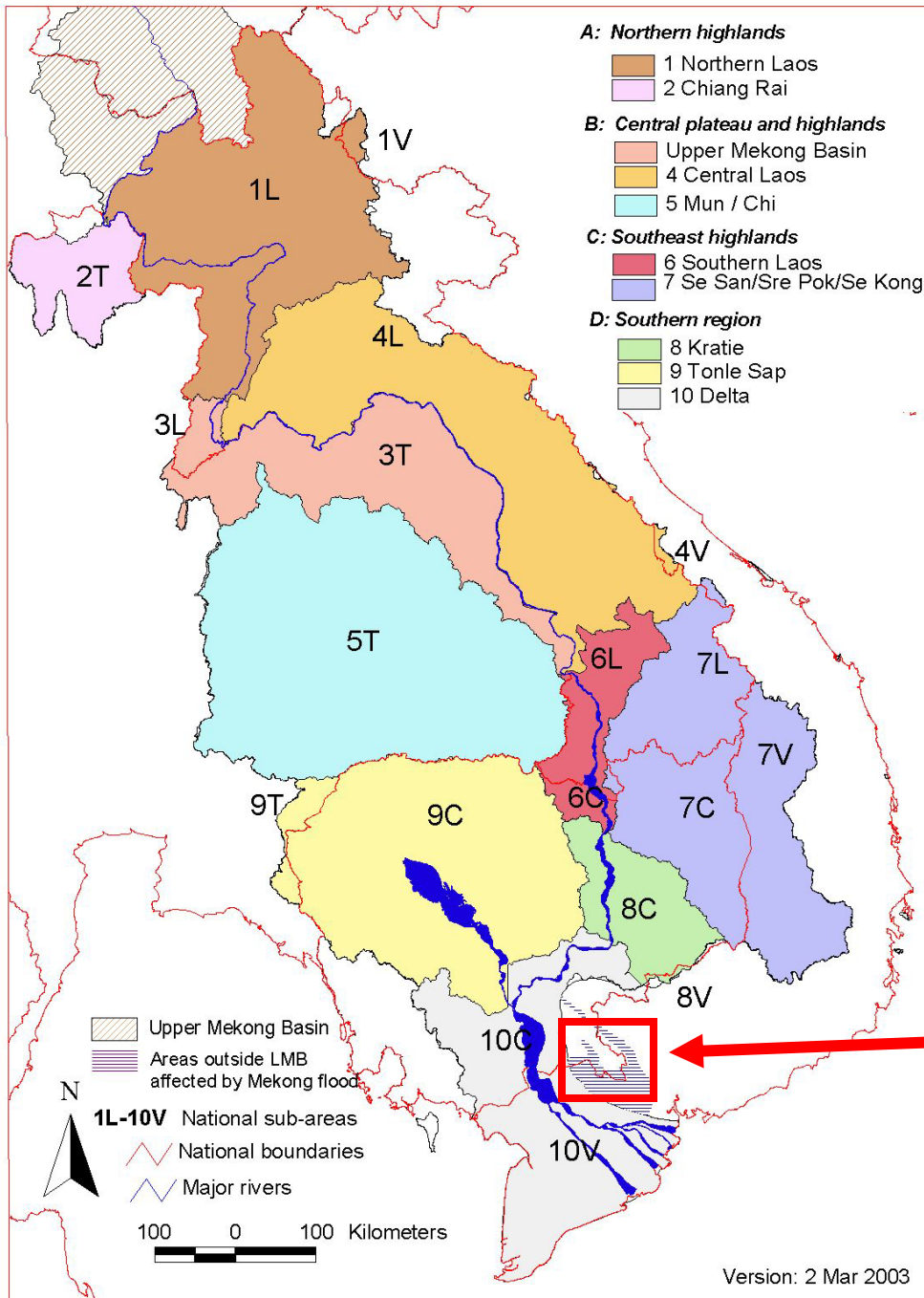
Kon Tum 1994



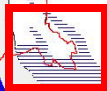
4 0 4 8 Kilometers

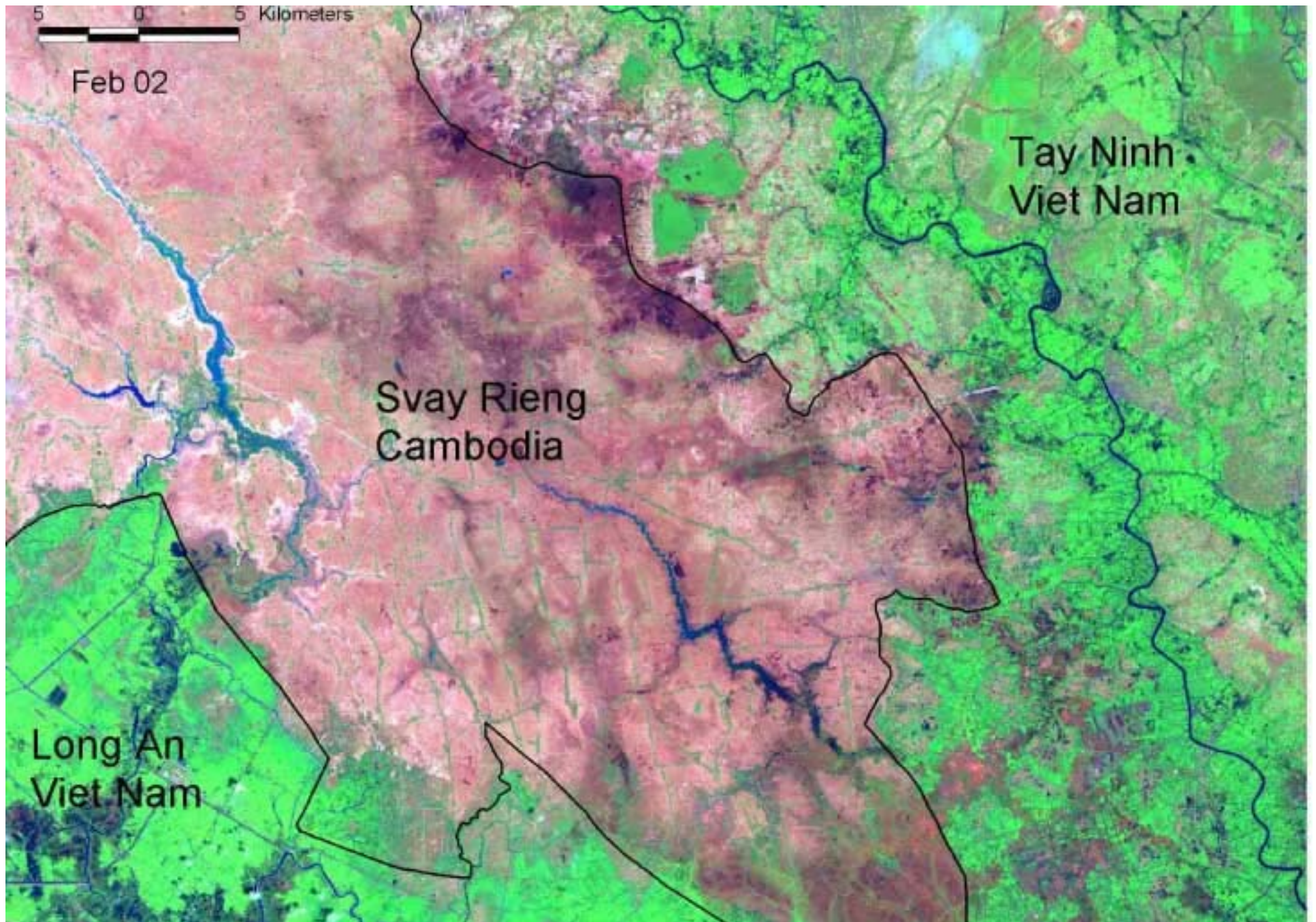
Kon Tum 2000 (Yali)

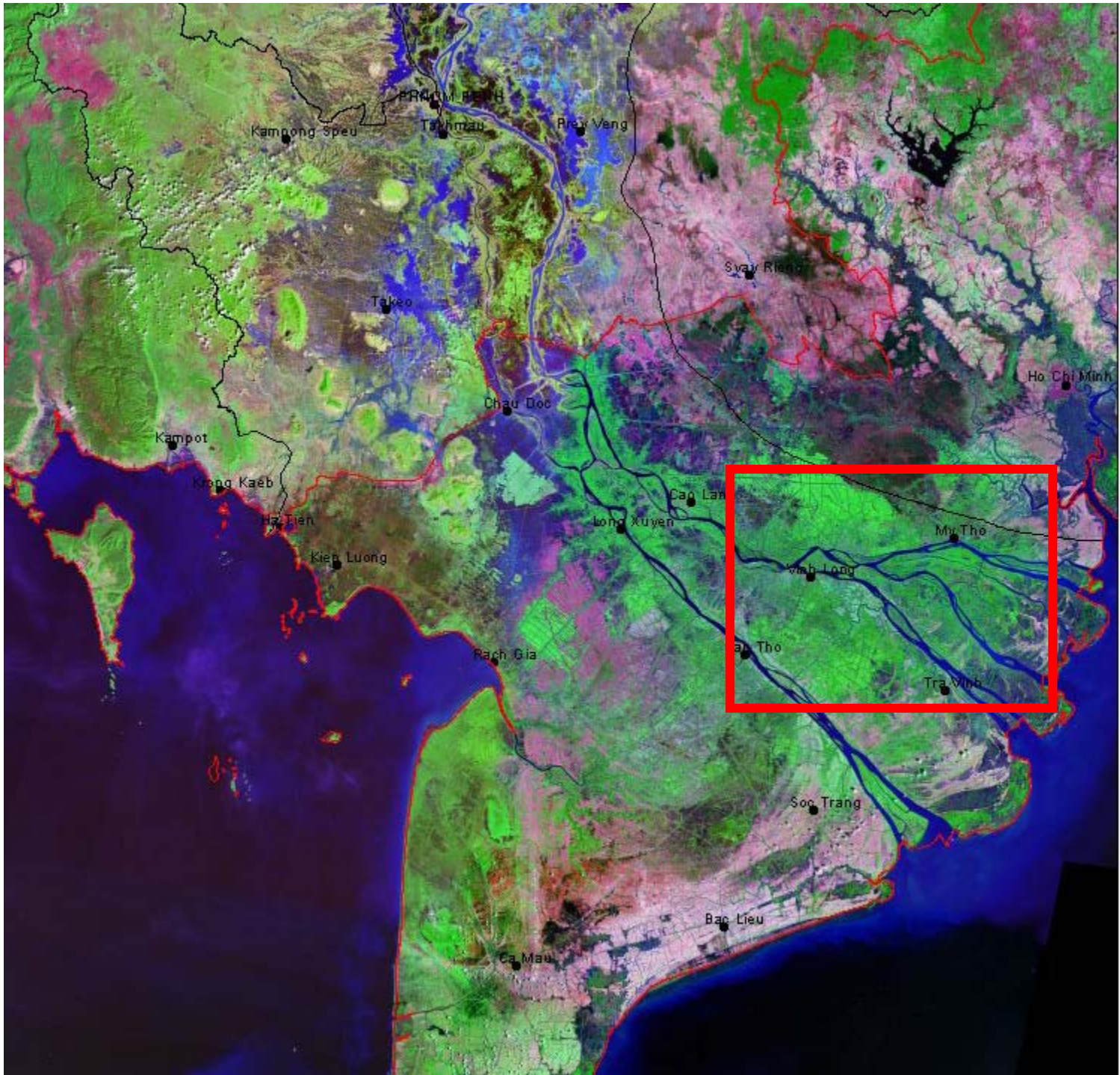
BDP subareas

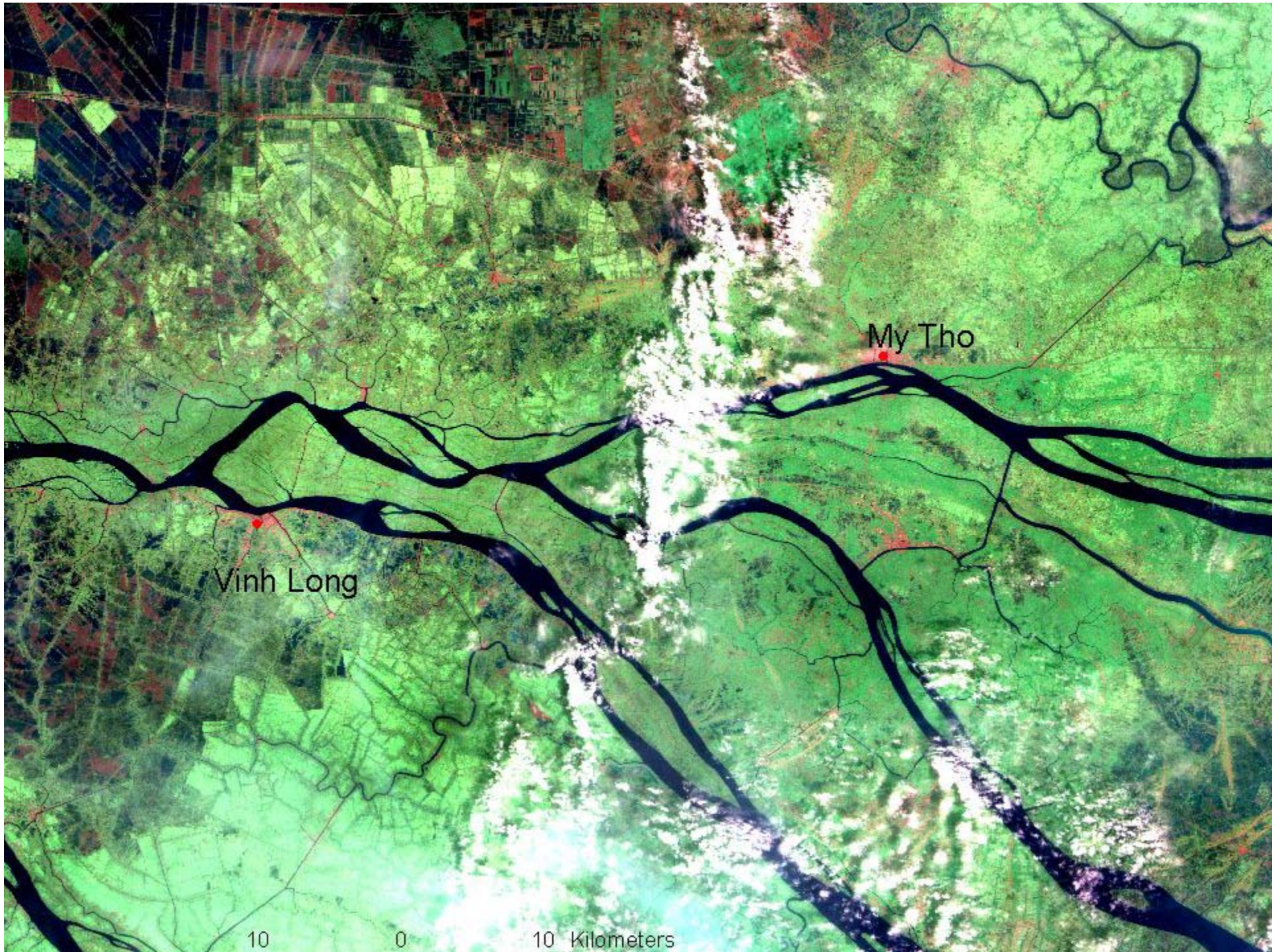


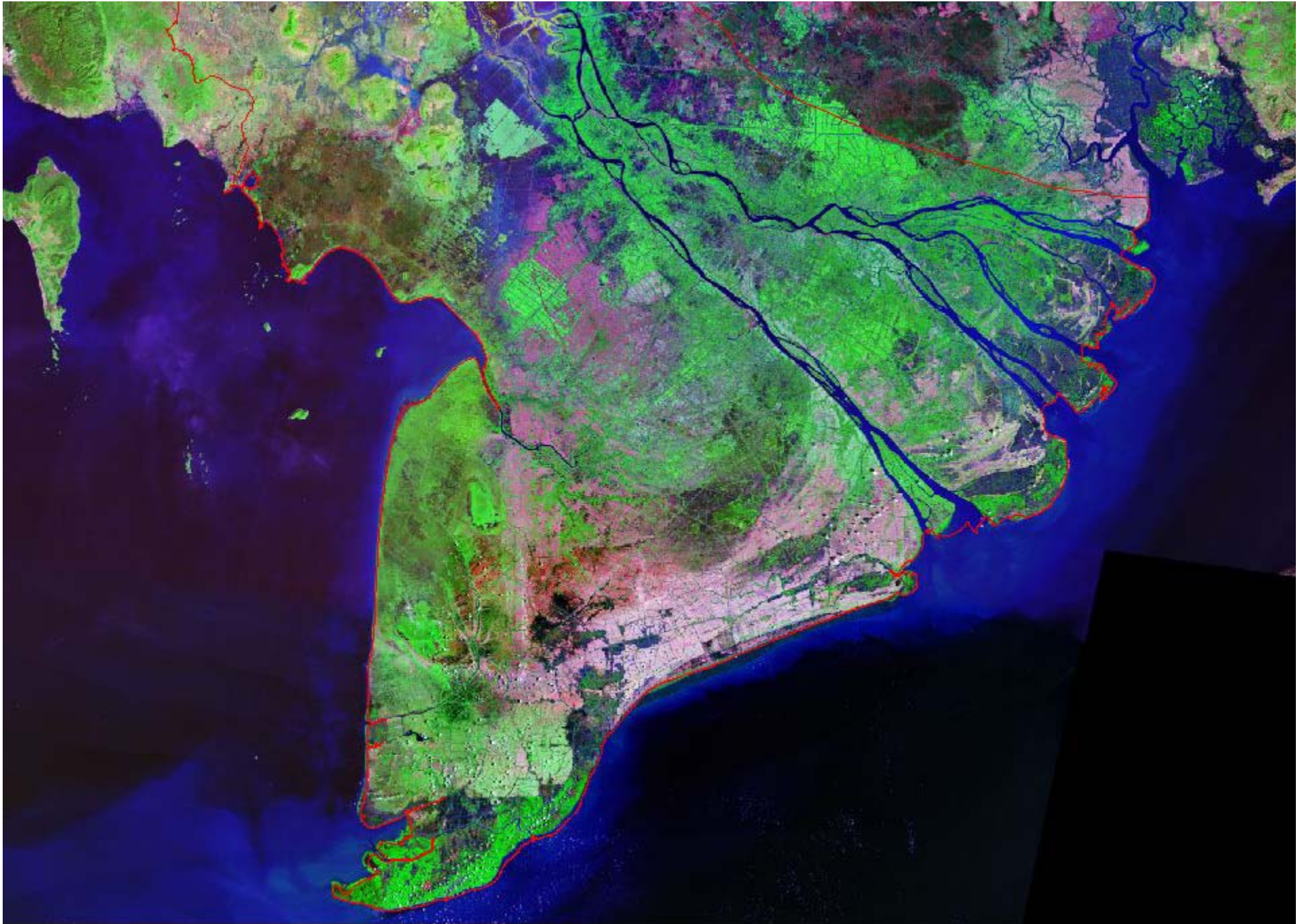
スバイリエン











0

50 Kilometers

Mekong Delta



- Salinity intrusion in Mekong delta

