



**US Army Corps  
of Engineers®**  
New Orleans District

# Orleans Avenue Outfall Canal



**US Army Corps  
of Engineers®**  
New Orleans District

**Contact Information:**

**New Orleans District  
7400 Leake Ave.  
New Orleans, LA 70118  
504-862-2201  
*askthecorps@usace.army.mil***

***<http://www.mvn.usace.army.mil/>***

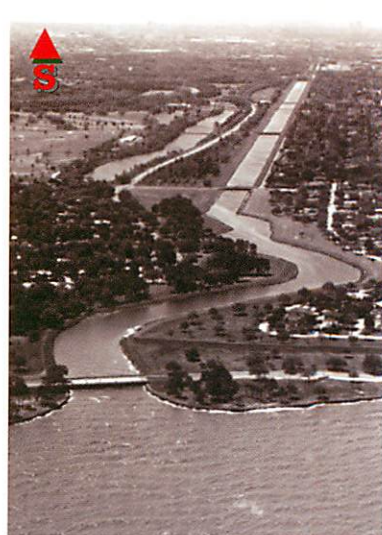
# Orleans Avenue Outfall Canal



YEAR  
PICTURE  
TAKEN:

**1969**

Canal dredged in late 1800's to provide drainage for the City of New Orleans.



**1983**

Prior to High Level Plan (raising the height of levees and floodwalls). At this time, closure structures were being considered.



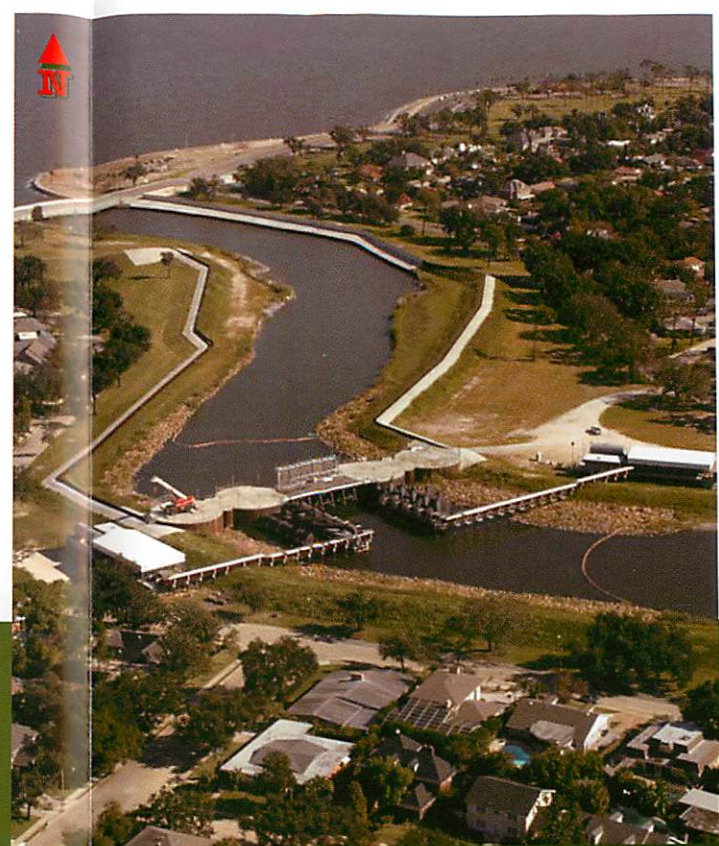
**1999**

High Level Plan and flood-proofed bridges complete. Closure structures were not approved for inclusion in improvements.



**2005**

Hurricane Katrina caused minimal damage to High Level Plan structures.



**October 2007**

Closure structures installed and 10 hydraulic pumps in place. Pump capacity at 2,200 cfs.



**US Army Corps  
of Engineers®**  
New Orleans District

USACE Photos

## Orleans Avenue Outfall Canal



**US Army Corps  
of Engineers®**  
New Orleans District

## London Avenue Outfall Canal



**US Army Corps  
of Engineers®**  
New Orleans District

### Contact Information:

**New Orleans District  
7400 Leake Ave.  
New Orleans, LA 70118  
504-862-2201  
[askthecorps@usace.army.mil](mailto:askthecorps@usace.army.mil)**

**<http://www.mvn.usace.army.mil/>**

## London Avenue Outfall Canal



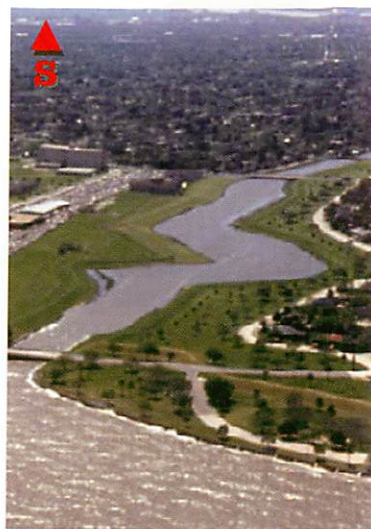
YEAR  
PICTURE  
TAKEN:

1949

Canal dredged in mid-1800's to provide navigation and drainage for the City of New Orleans.

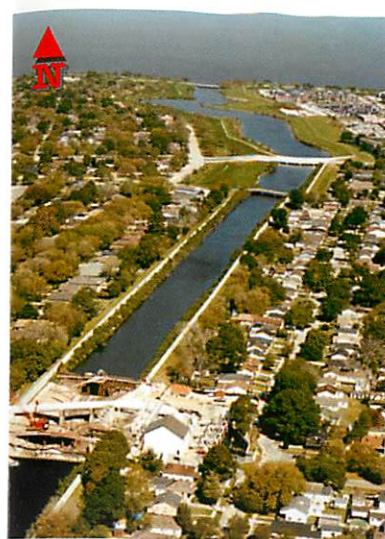


**US Army Corps  
of Engineers®**  
New Orleans District



1983

Prior to High Level Plan (raising the height of levees and floodwalls). At this time, closure structures were being considered.



2001

Floodwall construction complete. Flood-proofing of canal bridges under construction. Congress directed parallel protection to be constructed in lieu of closure structures (1996).



2005

Hurricane Katrina caused two breaches in floodwalls.



October 2007

Closure structures installed. Armored levee tie-ins in place at Lakefront. Breach repairs nearing completion. 12 hydraulic and 8 direct drive pumps in place. Pump capacity at 5,200 cfs.

USACE Photos

## London Avenue Outfall Canal

# Gulf Intracoastal Waterway at the Paris Road Bridge



**US Army Corps  
of Engineers®**  
New Orleans District



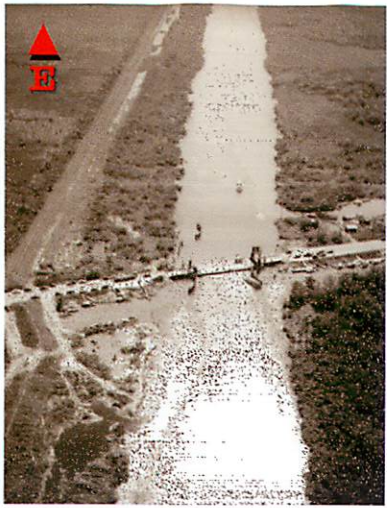
**US Army Corps  
of Engineers®**  
New Orleans District

## Contact Information:

New Orleans District  
7400 Leake Ave.  
New Orleans, LA 70118  
504-862-2201  
[askthecorps@usace.army.mil](mailto:askthecorps@usace.army.mil)

<http://www.mvn.usace.army.mil/>

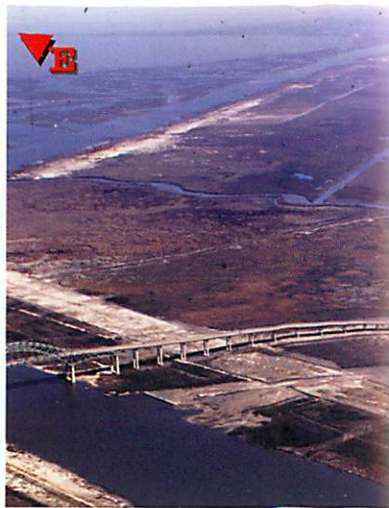
# Gulf Intracoastal Waterway at the Paris Road Bridge



YEAR  
PICTURE  
TAKEN:

**1953**

Pontoon bridge  
at Paris Road. No  
levee on the  
south side of the  
GIWW.



**1970**

New Paris Road  
bridge in place.  
Construction  
underway on  
south side levee.



**1999**

Paris Road  
floodwall under  
construction.



**2005**

Hurricane  
Katrina caused  
damage to Paris  
Road floodwall.



**October 2007**

Repaired floodwall at  
Paris Road bridge,  
completed June 2006.



**US Army Corps  
of Engineers®**  
New Orleans District

## Gulf Intracoastal Waterway at the Paris Road Bridge

# Mississippi River Gulf Outlet at Bayou Bienvenue



**US Army Corps  
of Engineers®**  
New Orleans District



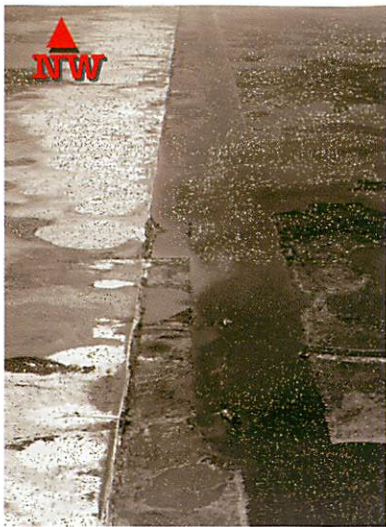
**US Army Corps  
of Engineers®**  
New Orleans District

## Contact Information:

New Orleans District  
7400 Leake Ave.  
New Orleans, LA 70118  
504-862-2201  
[askthecorps@usace.army.mil](mailto:askthecorps@usace.army.mil)

<http://www.mvn.usace.army.mil/>

# Mississippi River Gulf Outlet at Bayou Bienvenue



YEAR  
PICTURE  
TAKEN:

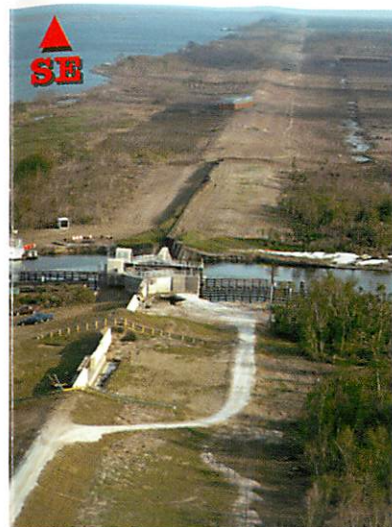
**1963**

Immediately after  
Mississippi River  
Gulf Outlet  
construction.



**1976**

After construction  
of the Bayou  
Bienvenue flood  
control structure.



**2001**

Pre-Katrina.



**2005**

Shortly after  
Hurricane Katrina,  
before removal of  
grounded barge.



**October 2007**

After completion of repairs  
and armoring of flood  
control structure.



**US Army Corps  
of Engineers®**  
New Orleans District

USACE Photos

## Mississippi River Gulf Outlet at Bayou Bienvenue



# 17<sup>th</sup> Street Outfall Canal



**US Army Corps  
of Engineers**  
New Orleans District

## Contact Information:

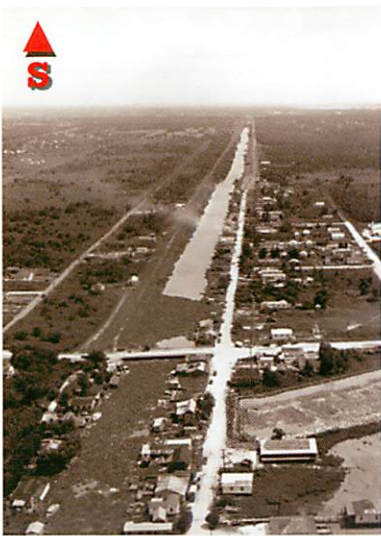
**New Orleans District  
7400 Leake Ave.  
New Orleans, LA 70118  
504-862-2201  
[askthecorps@usace.army.mil](mailto:askthecorps@usace.army.mil)**

**<http://www.mvn.usace.army.mil/>**



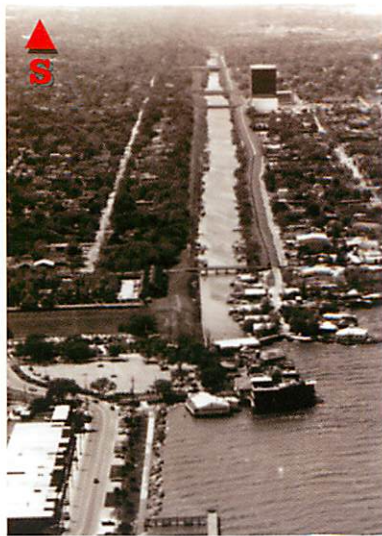
**US Army Corps  
of Engineers**  
New Orleans District

# 17<sup>th</sup> Street Outfall Canal



YEAR  
PICTURE  
TAKEN:

1949



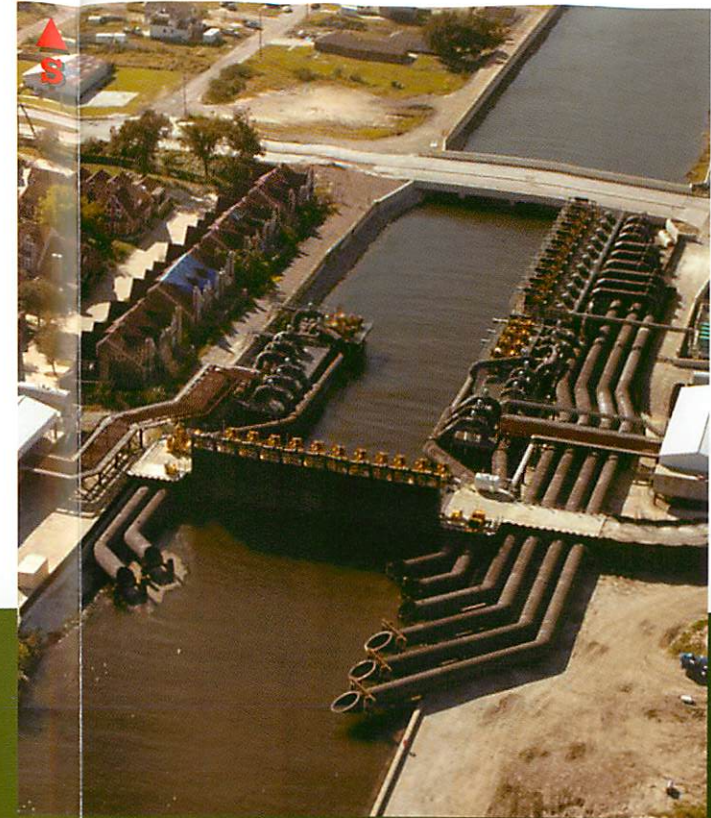
1983



2001



2005



October 2007

Closure structures installed;  
18 hydraulic pumps, 11 direct  
drive pumps and 14 portable  
pumps in place. Pump capacity  
at 9,200 cfs.

Originally built as a  
bed for railroad  
tracks in mid-1800's,  
was later dredged as  
a canal for city  
drainage.

Prior to High Level  
Plan (raising the  
height of levees  
and floodwalls).  
At this time, closure  
structures were  
being considered.

High Level Plan and  
flood-proofed bridges  
were nearly complete.  
Corps agreed to  
construct parallel  
protection in lieu of  
closure structures  
because cost was  
equivalent.

Shortly after  
Hurricane  
Katrina caused a  
levee breach.



**US Army Corps  
of Engineers®**

New Orleans District

USACE Photos

## 17<sup>th</sup> Street Outfall Canal