

Indonesia (Jakarta) FLOODS

Affected Areas	West Java, Indonesia	Death Toll	61
	Special Capital Territory of Jakarta, West Java Province, Banten Province		
Period	December 31, 2019 to January 8, 2020	Missing	1
Outline	Overnight torrential rain caused deadly floods and landslides in Jakarta Metropolitan Area.		

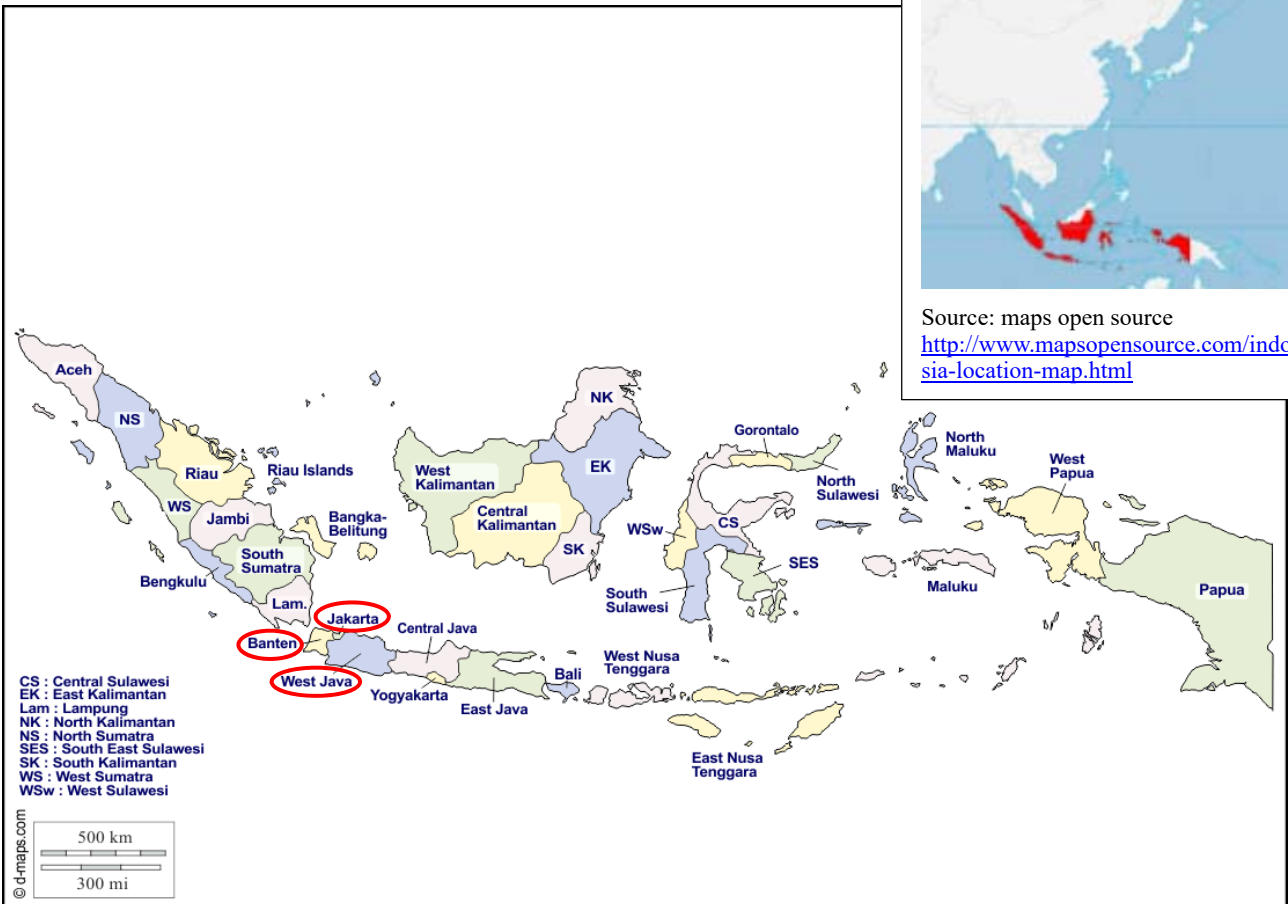
The above information is based on press release by media and government agencies.

Affected Areas ○

Location of Indonesia



Source: maps open source
<http://www.mapsofsource.com/indonesia-location-map.html>



Map: d-maps https://d-maps.com/carte.php?num_car=25207&lang=en





Satellite detected water extent as of 2 January 2020 over Banten, Dki Jakarta and Jawa Barat Province of Indonesia

This map illustrates satellite-detected surface water in Banten, Dki Jakarta and Jawa Barat Province of Indonesia as observed from Sentinel-1 imagery acquired on the 2 January 2020. Approximately 256 km² of land appear to be flooded. This is a preliminary analysis and has not yet been validated in the field. Please send ground feedback to UNITAR - UNOSAT.

Important Note: Flood analysis from Sentinel-1 imagery acquired on 2 January 2020 may seriously underestimate presence of standing flood water in built up areas due to backscattering properties of the radar signal.

Legend

- Airport
- Primary road
- Province boundary
- Regency boundary
- Analysis extent
- Reference water
- Satellite detected water (2 January 2020)

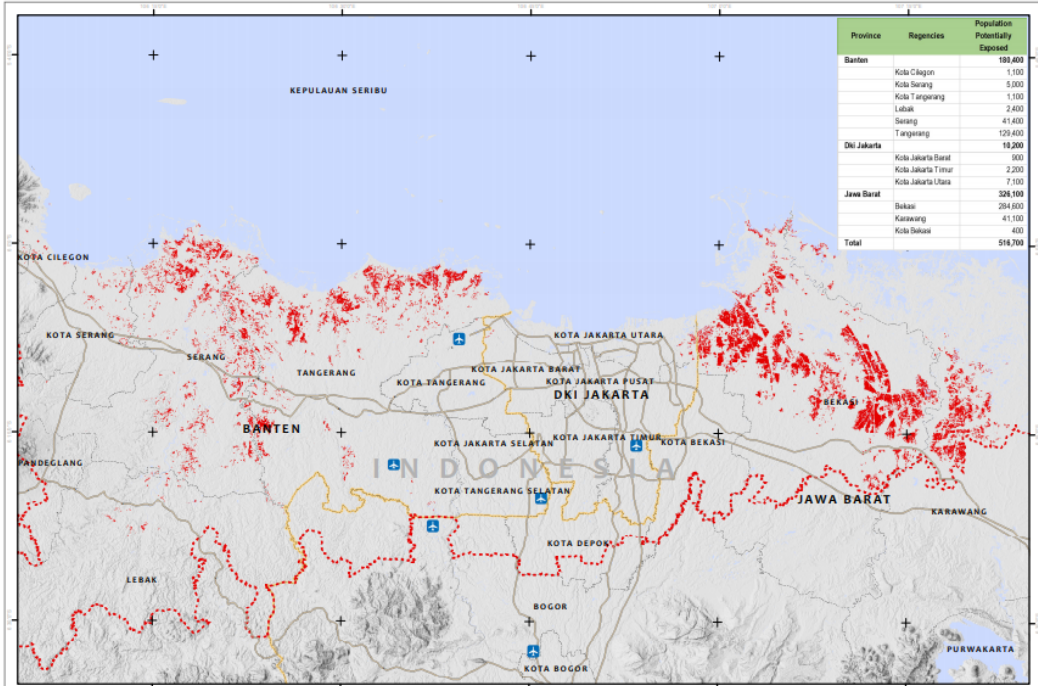
Map Scale for A3: 1:450,000

Analysis conducted with SNAP v1.0 and ArcGIS v10.7
Coordinate System: WGS 1984 UTM Zone 48S
Projection: Transverse Mercator
Datum: WGS 1984
Units: Meter

Satellite Data (Foot): Sentinel-1
Imagery Date: 2 January 2020
Resolution: 10 m
Copyright: Contains modified Copernicus Sentinel data (2019)
Source: ESA

Boundary data: OCHA RDAP HDX
Population Data: WorldPop (2020)
Road data: OpenStreetMap
Analysis: UNITAR - UNOSAT
Production: UNITAR - UNOSAT

The depiction and use of boundaries, geographic names and related data shown here are not warranted to be error-free nor do they imply official endorsement or acceptance by the United Nations. UNOSAT is a program of the United Nations Institute for Training and Research (UNITAR), providing satellite imagery and related geographic information, research and analysis to UN humanitarian & development agencies & their implementing partners. This work by UNITAR-UNOSAT is licensed under a CC BY-NC 3.0.



Source: United Nations, unitar

https://reliefweb.int/sites/reliefweb.int/files/resources/UNOSAT_A3_Natural_Landscape_FL20200101IDN_Banten_DkiJakarta_JawaBarat_IDN_02012020.pdf