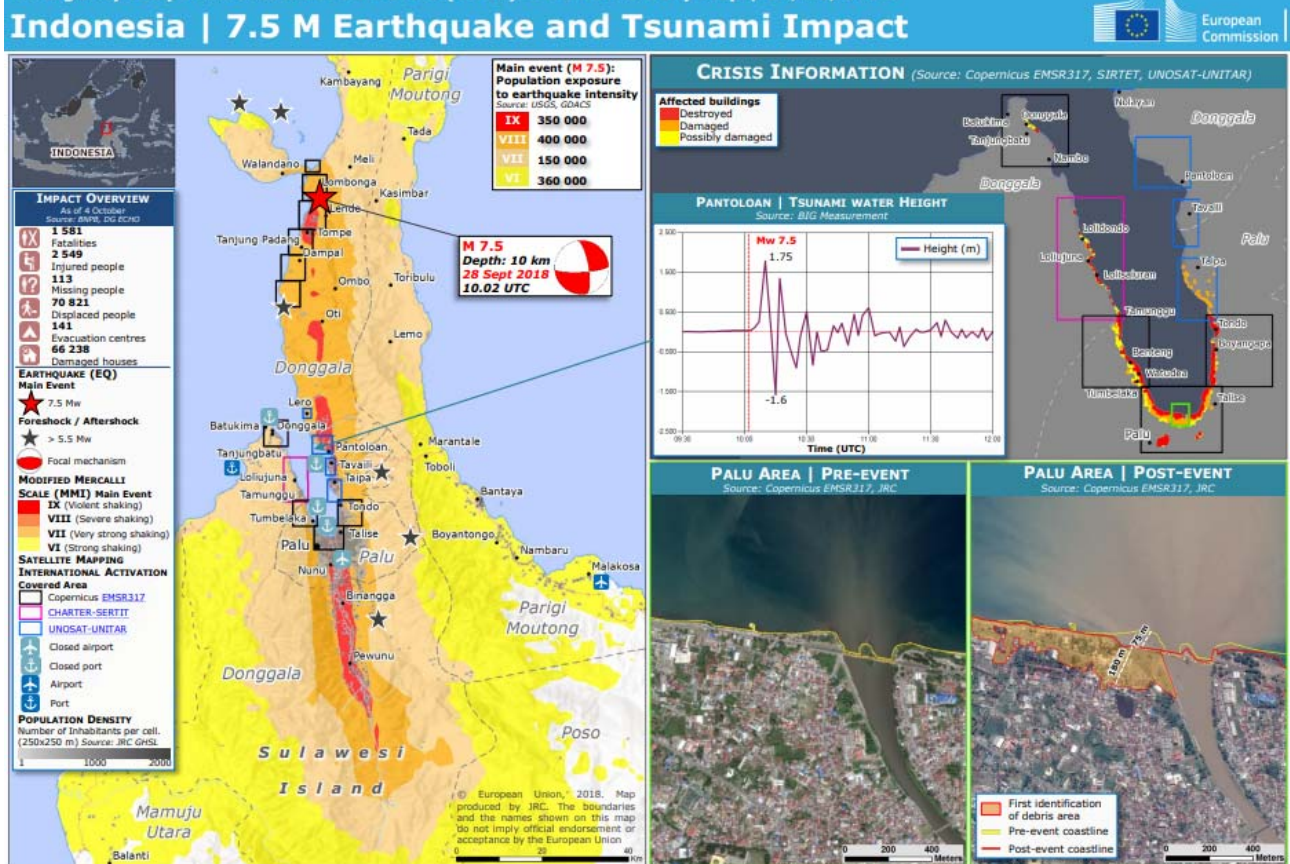


Indonesia (Sulawesi) Tsunami (Earthquake)

Affected Areas	Sulawesi, Indonesia	Death Toll	4,340
	Central Sulawesi: Palu City (Capital), Donggala Regency, Sigi Regency and Parigi Moutong Regency		
Date of Occurrence	September 28, 2018	Missing	667
Outline	Strong M7.5 earthquake and tsunami struck Central Sulawesi. Palu City was devastated by liquefaction and landslides as well as tsunami.		

Impacts as of October 4 (European Civil Protection and Humanitarian Aid Operations)

Emergency Response Coordination Centre (ERCC) – DG ECHO Daily Map | 04/10/2018



Source: <https://reliefweb.int/map/indonesia/indonesia-75-m-earthquake-impact-emergency-response-coordination-centre-ercc-dg-echo>

Liquefaction in Balaroa (United Nations)



Source: <https://news.un.org/en/story/2018/10/1022962>

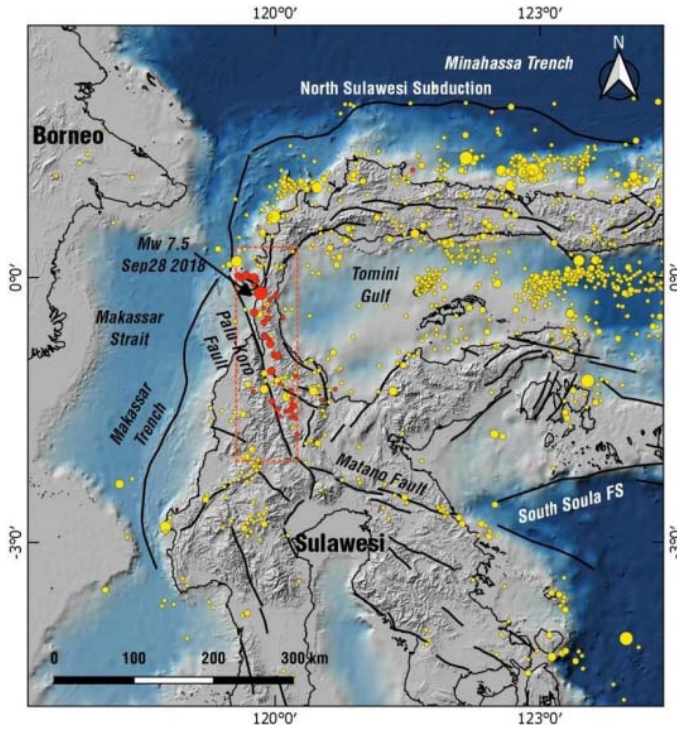
Tsunami damage in Donggala (UNICEF)



Source: <https://news.un.org/en/story/2018/10/1022352>



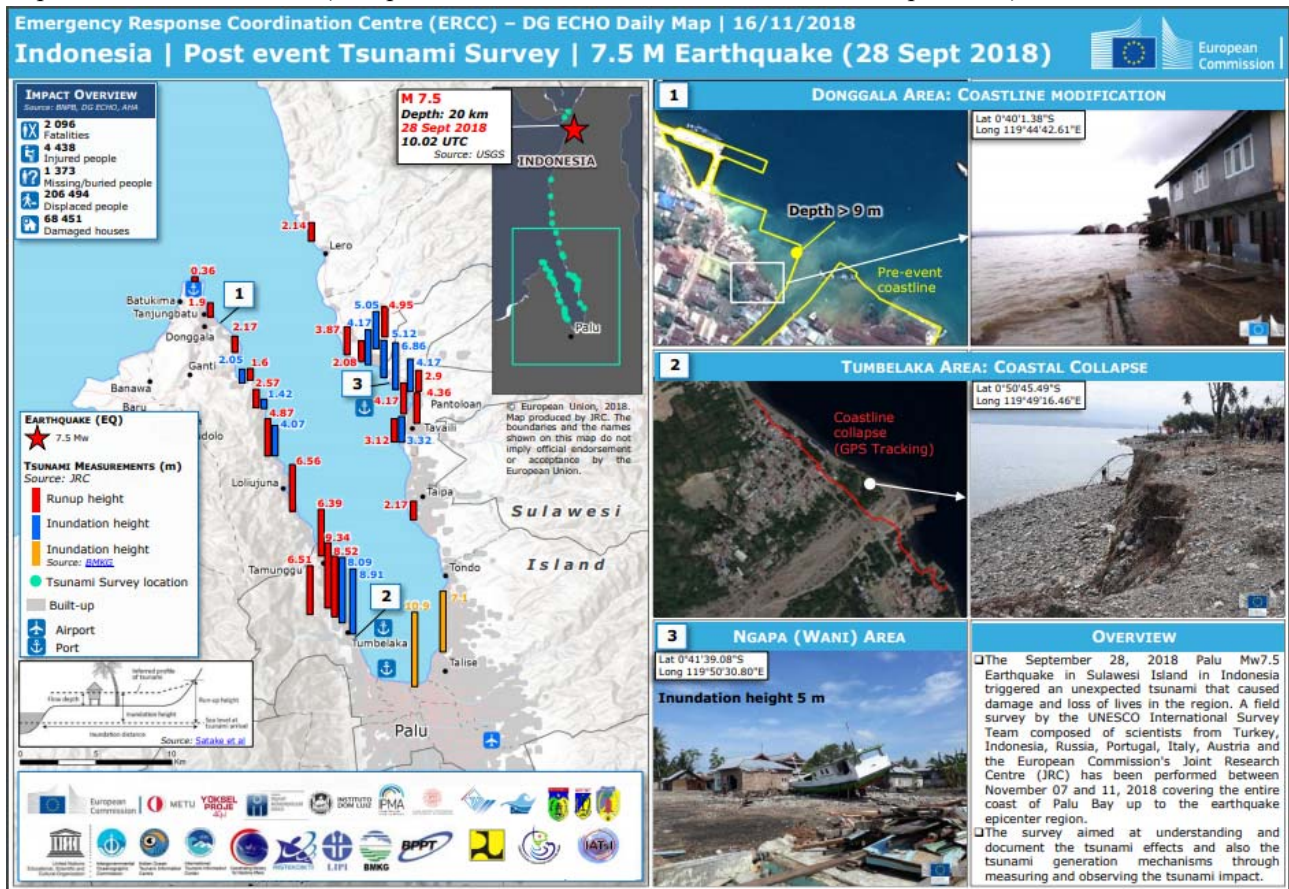
Tectonic setting and seismicity of Sulawesi Island (Global Disaster Alerting Coordination System: GDACS)



- Red dotted box marks the Palu-Koro Fault zone, associated with the M7.5 September 2018 Earthquake ruptures.
- Yellow solid circles are M>5 seismicity (1970-2018).
- Red solid circles are epicentres from the M7.5 earthquake sequence with M>4.

Source: <http://www.gdacs.org/Public/download.aspx?type=DC&id=119>

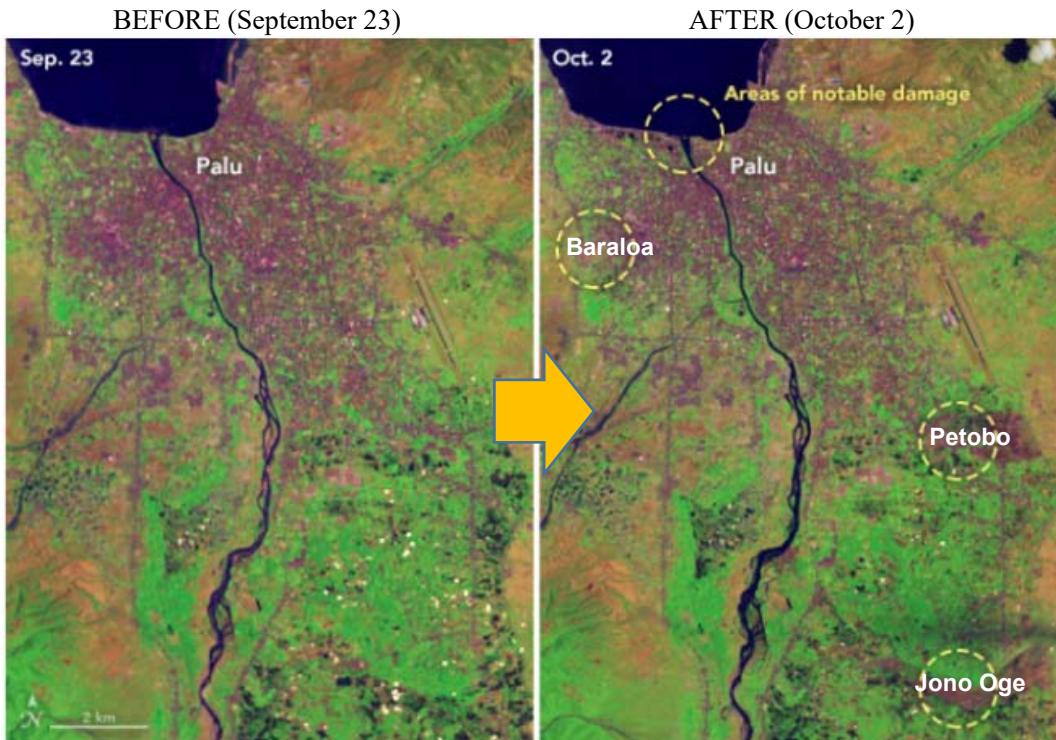
Impacts as of November 16 (European Civil Protection and Humanitarian Aid Operations)



Source: https://reliefweb.int/sites/reliefweb.int/files/resources/ECDM_20181116_Indonesia_Tsunami_Survey.pdf

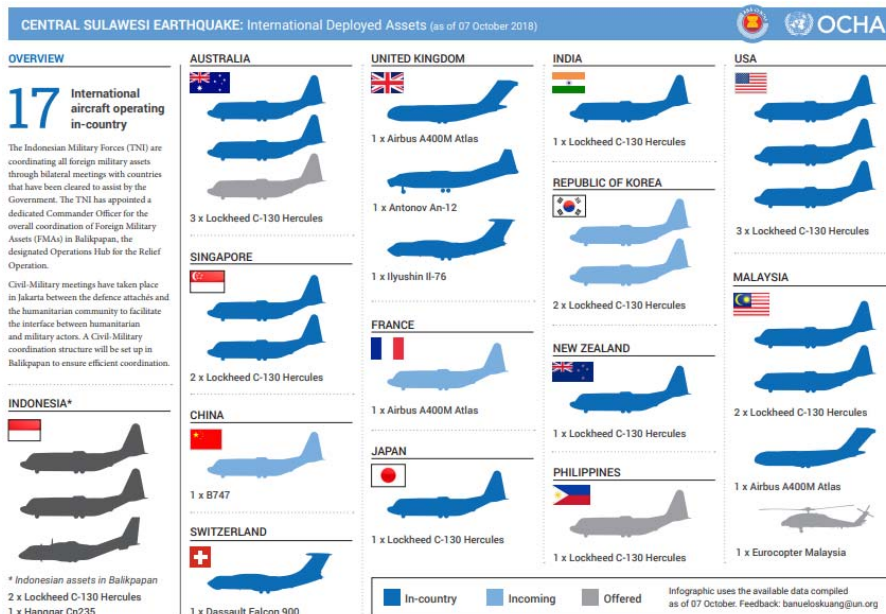


Before and After Images (NASA)



Source: <https://disasters.nasa.gov/sulawesi-island-indonesia-earthquake-and-tsunami-2018/usgs-landsat-8-captures-mass-destruction>

International Aircrafts assisting Indonesia as of October 7th (AHACentre / United Nations)



Source: <https://reliefweb.int/sites/reliefweb.int/files/resources/Sulawesi%20FDA%20071018%20Final.pdf>

