



International Federation
of Red Cross and Red Crescent Societies



Community assessments

Disaster Risk Reduction People-Centered Approach



**The lessons learned from
Hurricane Mitch; earthquakes in
El Salvador and Mexico;
droughts in Central America and
several other neglected disasters**

**Continuous assessment and
activities relating to disaster risk
reduction in the Americas**

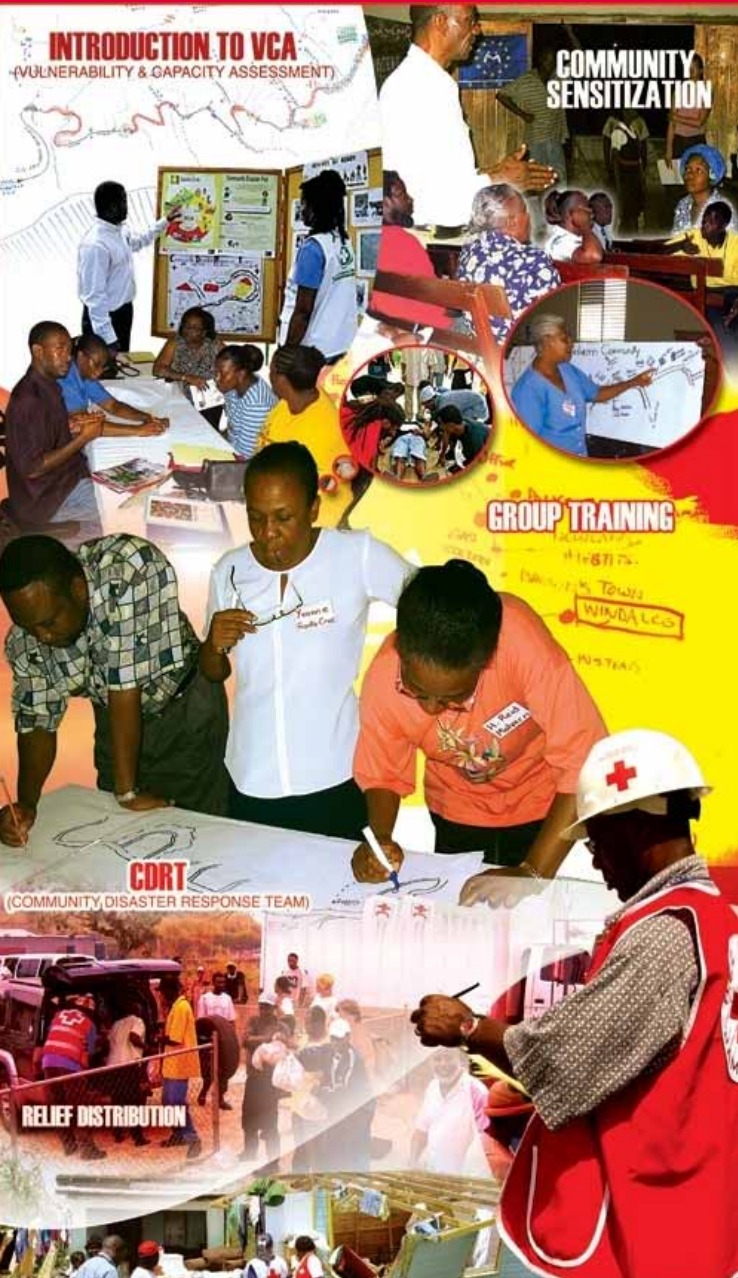


Red Cross contribution to disaster risk reduction activities in the Americas start with a proper investigation at community level

The results enable the Red Cross – along with the people in the community – to *evaluate the vulnerabilities and capacities (VCA)* at that location.

From this emerges a *diagnosis of the risks* that affect the people, and the *design of actions and projects* that can be used to reduce vulnerabilities, usually by **increasing local capacities.**





It is highly likely that the people in the community will have different priorities from those of the RC/RC, and that emerging projects may have little or no direct connection to natural hazards and disasters that the NS wants to prepare for.

This does not matter, since the main gain of the VCA is the participatory involvement of the people.



Investigations (VCA) often start from a disaster management perspective, but end up supporting projects that are not related directly to natural hazards. Typical priorities include:

- **Health issues**
- **Drinking water**
- **Crime prevention**
- **Road accidents**
- **Migration**
- **Livelihoods**



Furthermore, a major lesson of VCA is that it has become a way to find out what the people's own priorities are.

This leads to the enrichment of the RC/RC to a much deeper involvement with the communities concerned.

Therefore, it becomes a key point for the Red Cross and Red Crescent Societies to use participatory methods to work with people in their communities no matter what the outcome is to identify the real risk and capacity.



It was recognized by the Red Cross and Red Crescent Societies the need to be consistent in their way to learn and reflect it in their educational components.

As a result of it, all training materials developed in the Americas included standard assessment techniques and methodology.

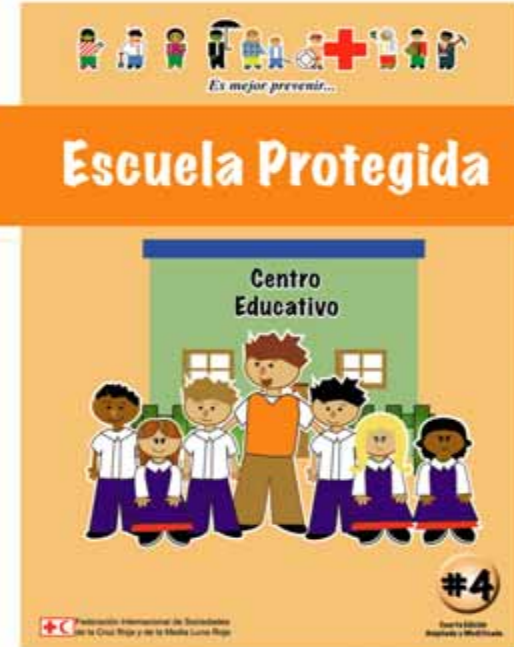


Es mejor prevenir...

Educación, Organización y Preparación Comunitaria para la Reducción del Riesgo



#1





Es mejor prevenir...

Diálogo Comunitario sobre Agua y Clima



Federación Internacional de Sociedades de la Cruz Roja y de la Media Luna Roja



Cuarta Edición Ampliada y Modificada



Es mejor prevenir...

Sistema de Alerta Temprana de Inundaciones en Cuencas Menores



Federación Internacional de Sociedades de la Cruz Roja y de la Media Luna Roja



Cuarta Edición Ampliada y Modificada



Es mejor prevenir...

INUNDACIONES



#10

Segunda Edición
Ampliada y Actualizada

Federación Internacional de Sociedades
de la Cruz Roja y de la Media Luna Roja



Es mejor prevenir...

Mantenimiento Comunitario de Escuelas



#15

Segunda Edición
Ampliada y Actualizada

Federación Internacional de Sociedades
de la Cruz Roja y de la Media Luna Roja



Es mejor prevenir...

Manejo de Albergues Temporales



#17

Segunda Edición
Ampliada y Actualizada

Federación Internacional de Sociedades
de la Cruz Roja y de la Media Luna Roja



Es mejor prevenir...

Primeros Auxilios Psicológicos



#6

Segunda Edición
Ampliada y Actualizada

Federación Internacional de Sociedades
de la Cruz Roja y de la Media Luna Roja



Es mejor prevenir...

Hogar Saludable



#7

Segunda Edición
Ampliada y Actualizada

Federación Internacional de Sociedades
de la Cruz Roja y de la Media Luna Roja



“Eye opener” for communities and organizations

Seasonal calendar and historical charts analyzed by using different indicators have proved to be extremely valuable and communities appreciated to be heard when time had come to make a snap-shot of those problems that were addressed during the process.

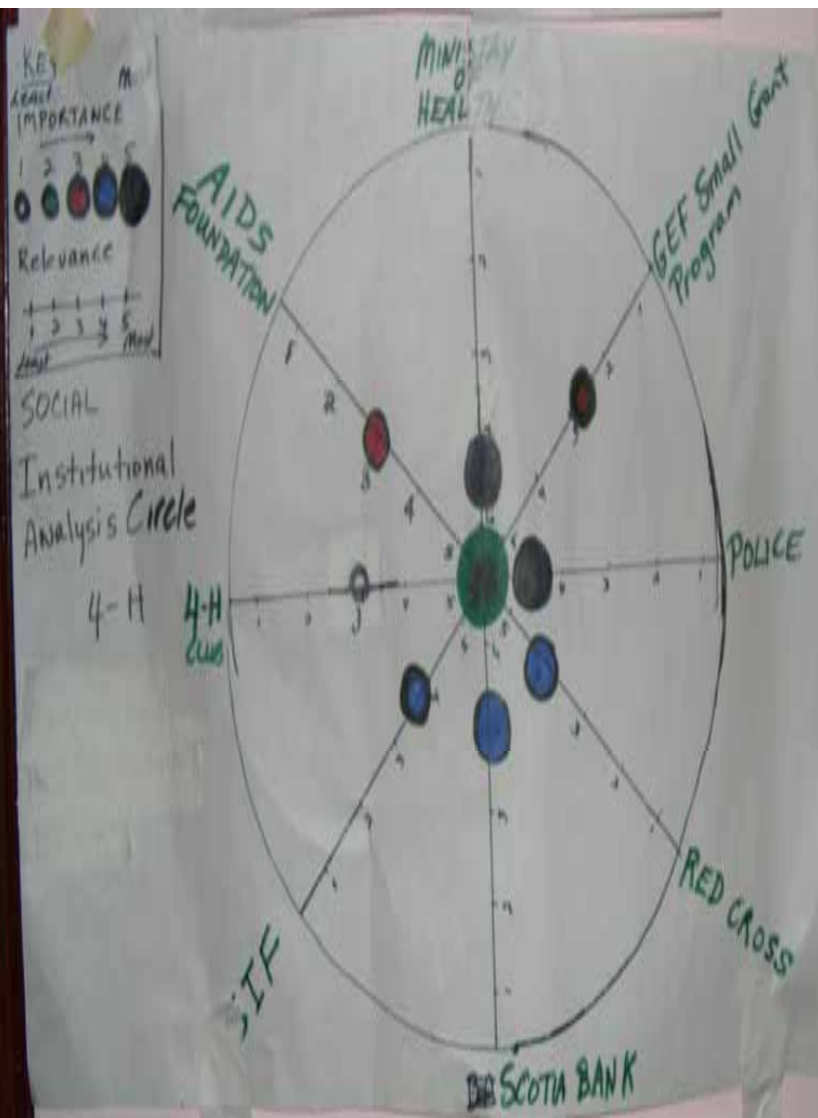


The VCA process has helped vulnerable communities to increase their spaces of dialogue and have found new ways to communicate between themselves and to agree upon different issues highlighted during the participatory process.

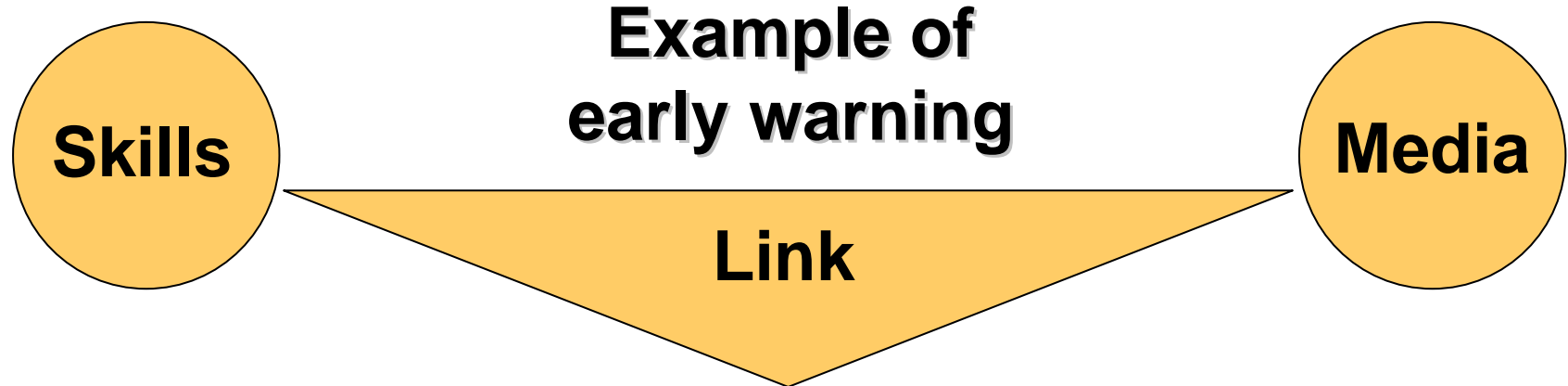


The Red Cross Red Crescent approach on capacities rather needs to facilitate a different way of doing things to solve the problems.

Social and network analysis



Networking between RC/RC and other national and local actors in countries where VCA and community disaster management activities were implemented has contributed to develop community projects. Practical examples are the those related to early warning systems.



Communication technologies link to

Scientists – Public Disaster Mitigation Officials

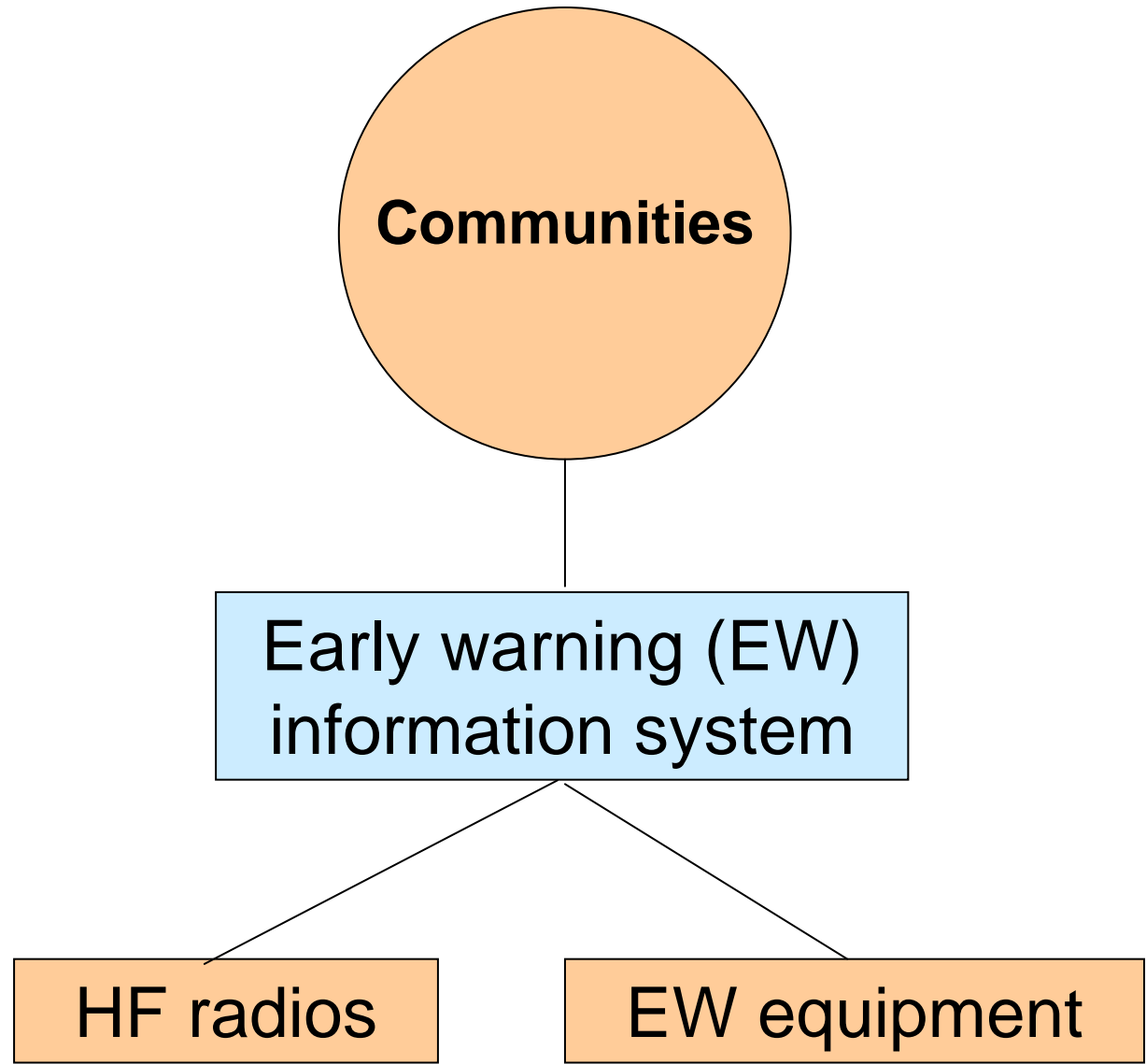
Education – Disaster Preparedness tracking

Alert authorities and warn people

Collect information, supplies resources

Coordinate rescue and relief

Motivate public, political, institutional response





By getting used to utilize radios, communities have been **able to inform** about different things: weather conditions, activities at the community, meeting reports, information **on local emergencies**, etc

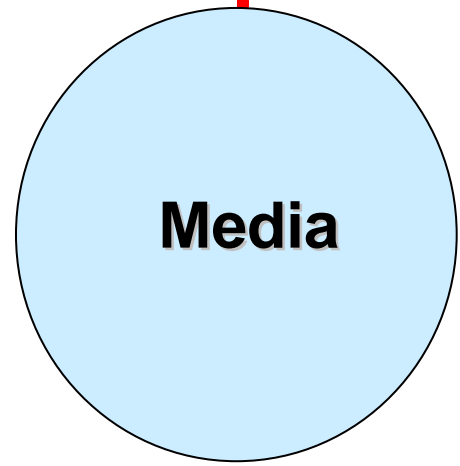
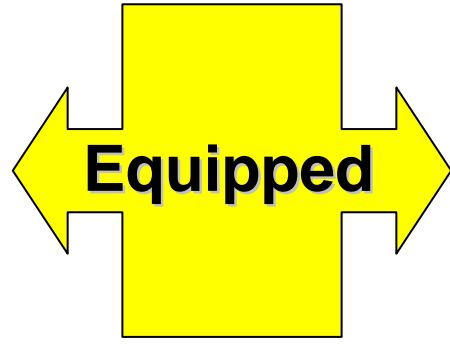


Thanks to radio equipment and networking, the **media have become more accessible.**

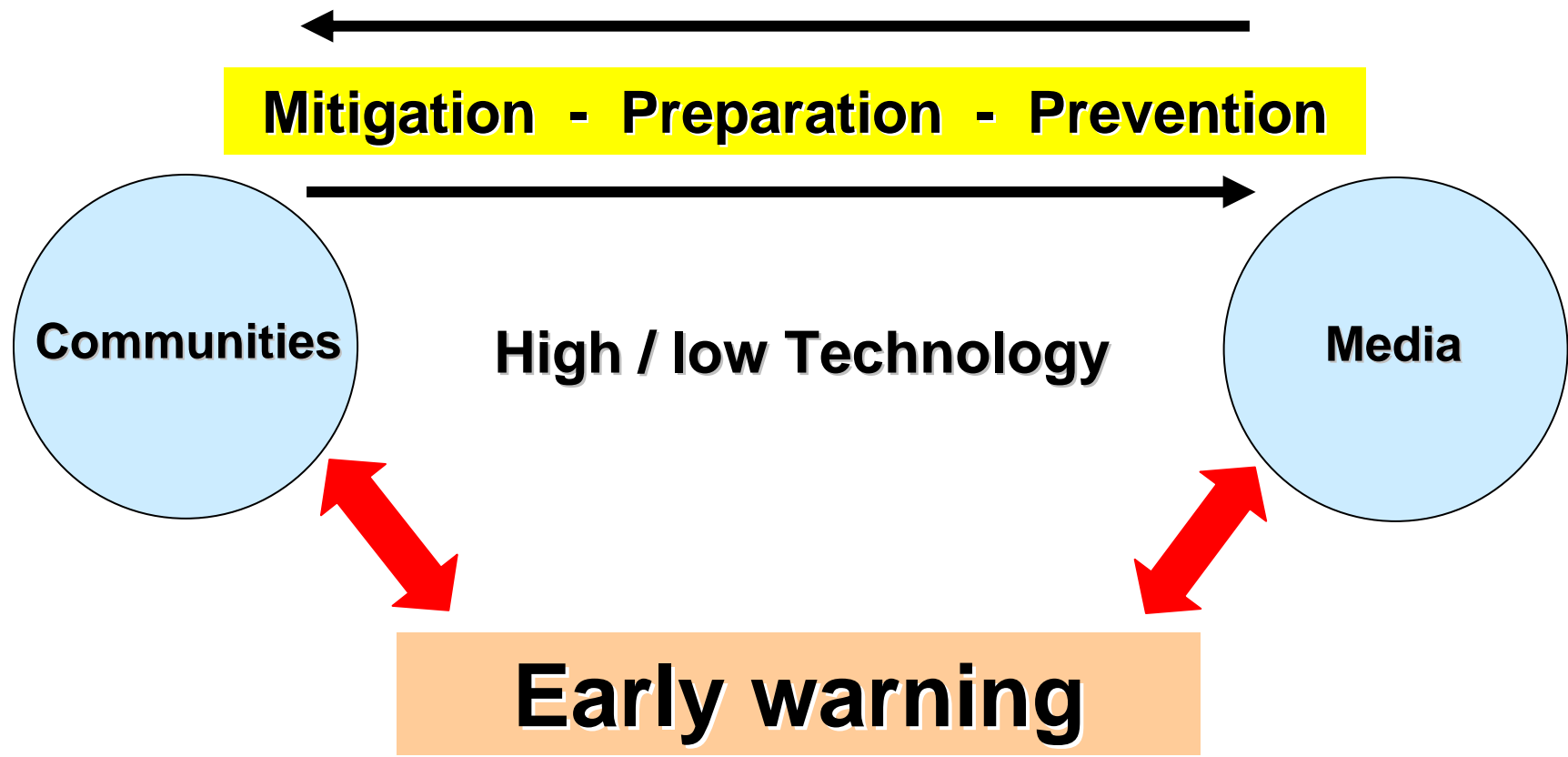
Important information is disseminated reaching the communities, allowing to create an informed public that could help to save lives at times of emergency



**Local, national,
international agenda**



Local events





An audio soap opera has been produced **involving different organizations** having an interest in disaster reduction initiatives.

The aim is to offer a high quality audio program to the media **designed to educate the public about what can be done in disaster reduction.**



Same audio material helps to spread the messages when addressing **different community sectors, such as schools, sports clubs, business in general...**

for a better understanding of measures and actions that communities should need to consider for disaster reduction.



Part of the participatory assessment process