

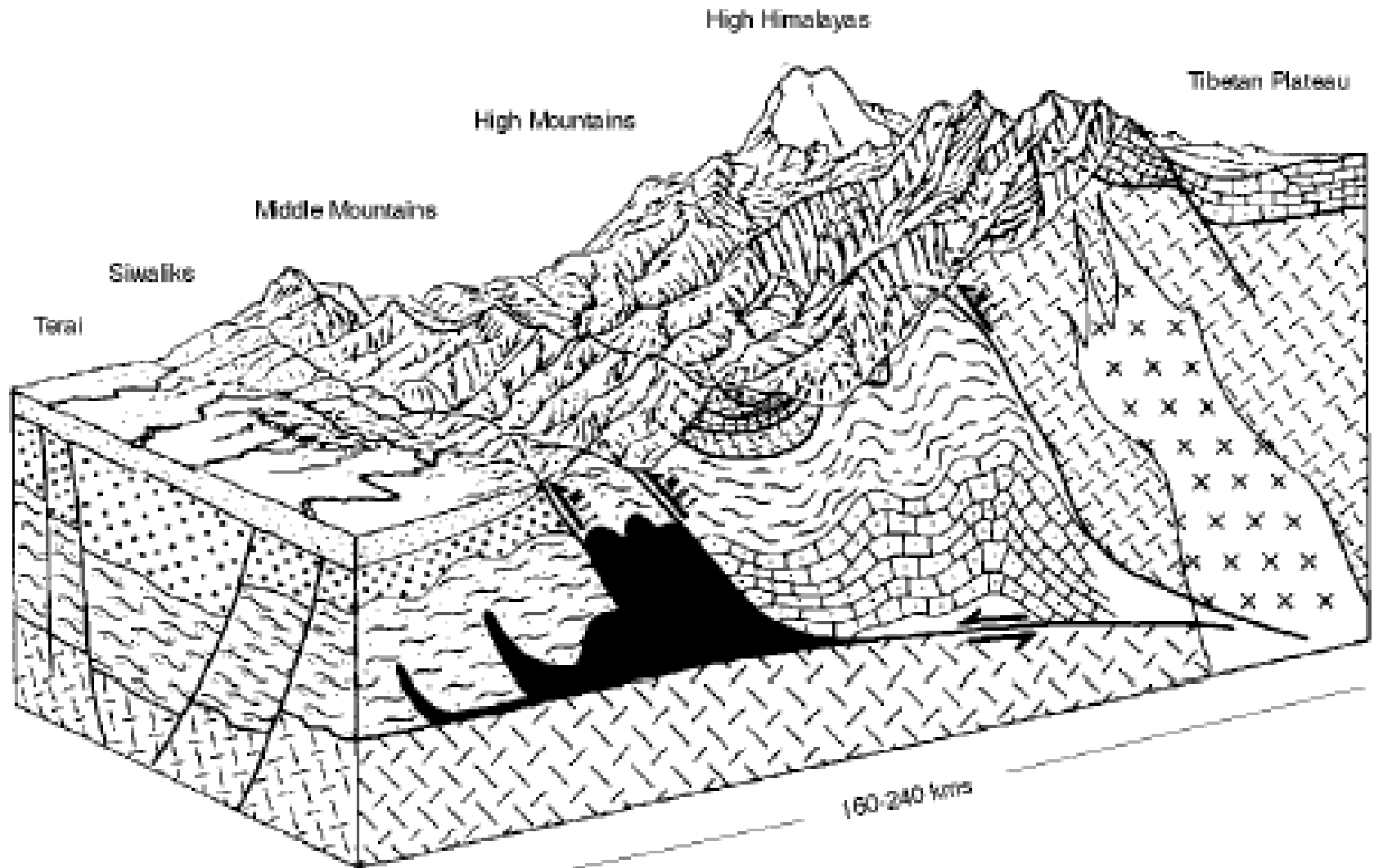
WATER AND DISASTERS THE CASE OF NEPAL

Ramesh Vaidya



Figure 1

Geographical Regions of Nepal

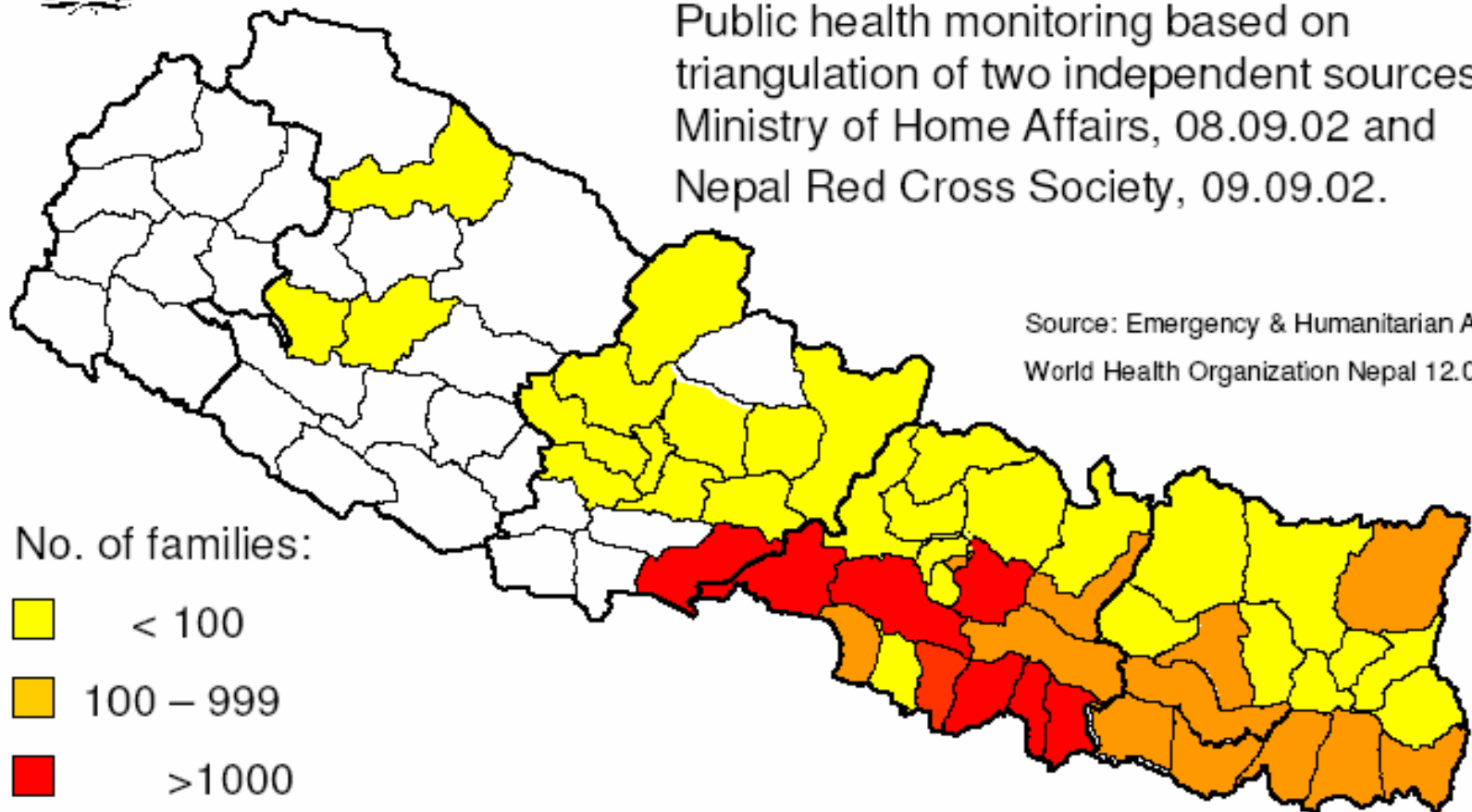




FLOODS & LANDSLIDES NEPAL 2002

Public health monitoring based on triangulation of two independent sources:
Ministry of Home Affairs, 08.09.02 and
Nepal Red Cross Society, 09.09.02.

Source: Emergency & Humanitarian Action
World Health Organization Nepal 12.09.02



Indicators: Number of affected families (MOHA) and
number of displaced families (NRCS).

TABLE 2: DAMAGES DUE TO FLOOD, LANDSLIDE AND AVALANCHES

YEAR	PEOPLE		LIVESTOCK LOSS (Nos.)	HOUSES DESTROY (Nos.)	AFFECTED FAMILY (Nos.)	LAND AFFECTED (Ha.)	PUBLIC INFRASTRUCT	ESTIMATED DIRECT LOSS (Million NRs.)
	DTH	INJURED						
1983	293	NA	248	NA	NA	NA	NA	240
1984	363	NA	3114	7566	NA	1242	869	37
1985	420	NA	3058	4620	NA	1355	173	58
1986	315	NA	1886	3035	NA	1315	436	16
1987	391	162	1434	33721	96151	18858	421	2000
1988	342	197	873	2481	4197	NA	NA	1087
1989	700	4	297	6203	NA	NA	NA	29
1990	307	26	314	3060	5165	1132	NA	44
1991	93	12	36	817	1621	283	25	21
1992	71	17	179	88	545	135	44	11
1993	1336	163	25425	17113	85254	5584	NA	4904
1994	49	34	284	569	3697	392	NA	59
1995	246	58	1535	5162	128540	41867.28	NA	1419
1996	262	73	1548	14037	36824	6093.4	NA	1186
1997	87	69	317	1017	5833	6093.4	NA	104
1998	273	80	982	13990	33549	326.89	NA	969
1999	209	92	309	2538	9768	182.4	NA	365
2000	173	100	822	5417	15617	888.9	NA	932
2001	196	88	377	3934	7901	NA	NA	251.1
2002	441	265	2024	18181	39309	10077.5	NA	418.91
2003	232	78	865	3017	7167	NA	NA	234.78
2004	131	24	495	3684	14238	321.82	NA	219.28
TOTAL	6799	1516	45927	146626	478438	95825.77	1968	14385.79
AVERAGE	324	72	3187	6979	22911	4563.13	94	685.03

Water, Water, Everywhere, But ...

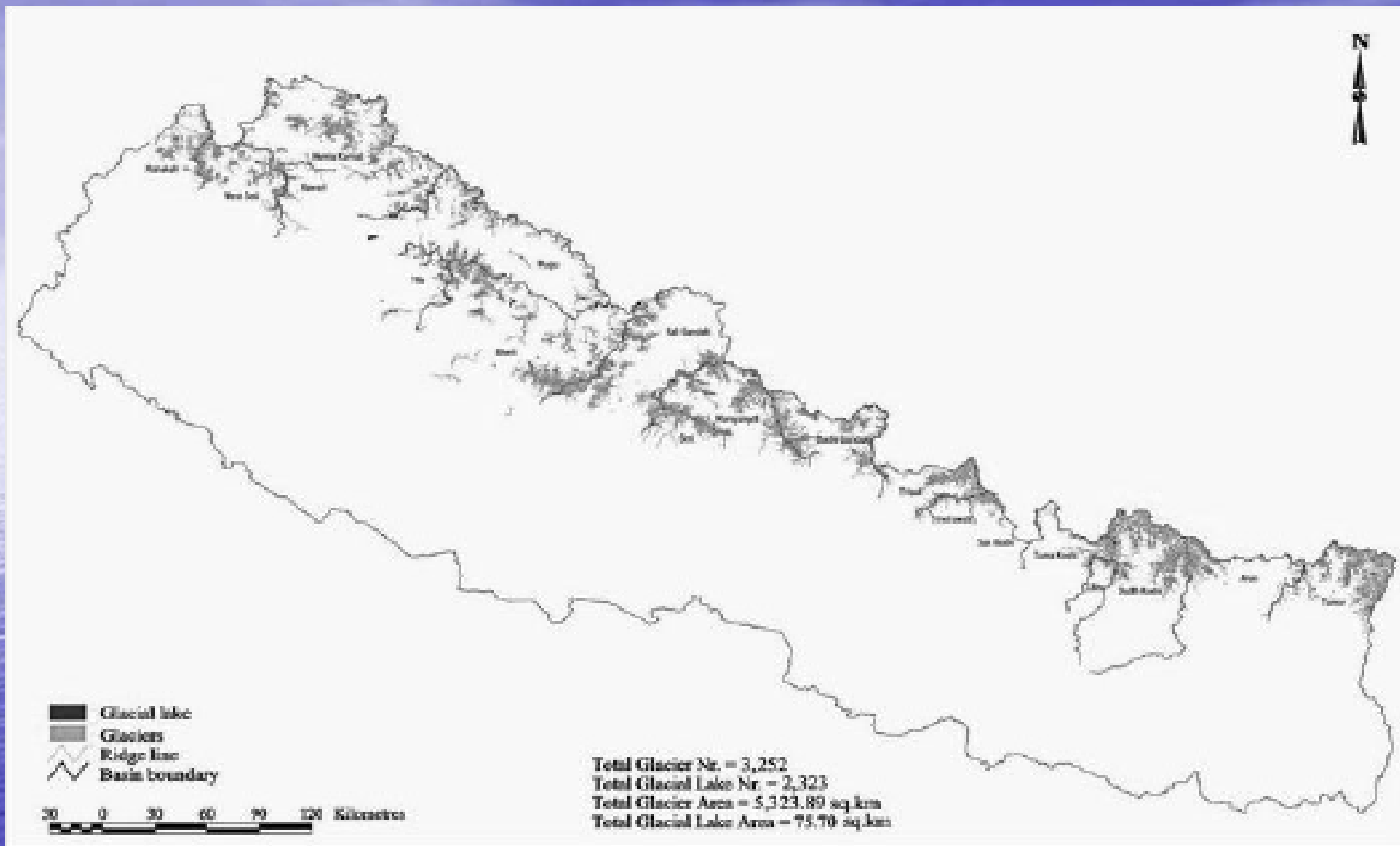
- The message in this video clip, on the destructive powers of water, comes from the legend, where King Bhagiratha sought to bring the River Ganges, or the Ganga, to the Earth from the Heaven, but the destructive powers of the Ganga, during its descent, would have been unbearable to the Earth, if not for the divine blessings of Lord Shiva.
- (Source: Nepal National Planning Commission)



The 1993 Disaster, Flooding of Villages, The Bagmati River

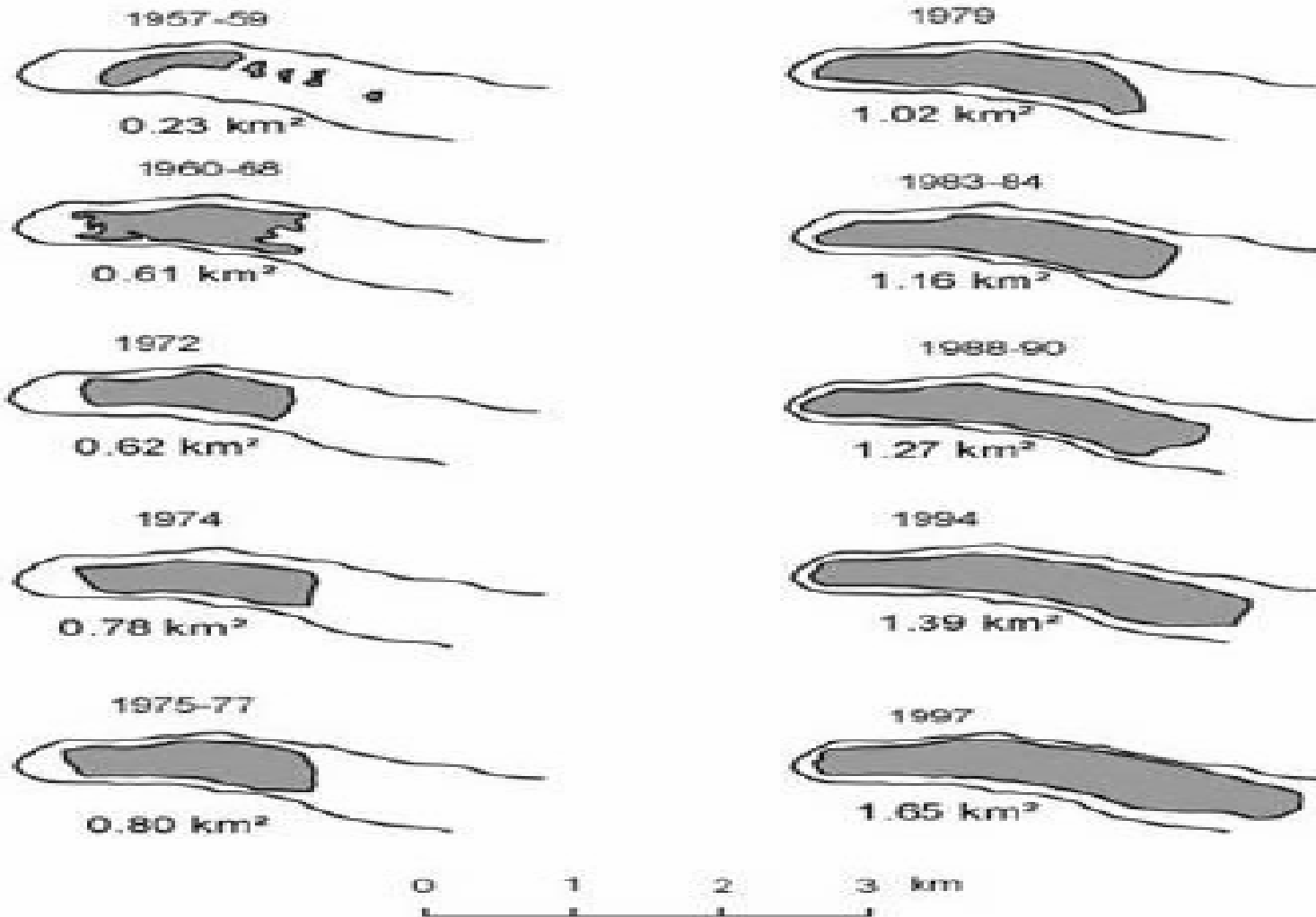


The 1993 Disaster, Landslides, Kathmandu-Pokhara Highway



Glacial lakes and potential GLOF sites in Nepal

Source: ICIMOD/UNEP 2002



The Tsho Rolpa Glacial Lake, 1957-1997

Source: Dept. of Hydrology and Meteorology, Nepal

Nepal Water Resources Strategy

(approved by the Cabinet on January 9, 2002)

- Project: Water Resources Strategy Formulation Project
- Identification and analysis of issues (Phase I: 1995-1996)
- Formulation of strategy options and a preferred strategy (Phase II: 1999-2001)
- Preparation of an action-plan to implement the strategy (Phase III: 2002-2004)
- Financial resources:
 - His Majesty's Government of Nepal
 - Japan Grant Fund of the World Bank
 - CIDA grant of Canada
 - The World Bank's NISP credit

Figure 7.1
Nepal's Water Sector Investment Requirements

