

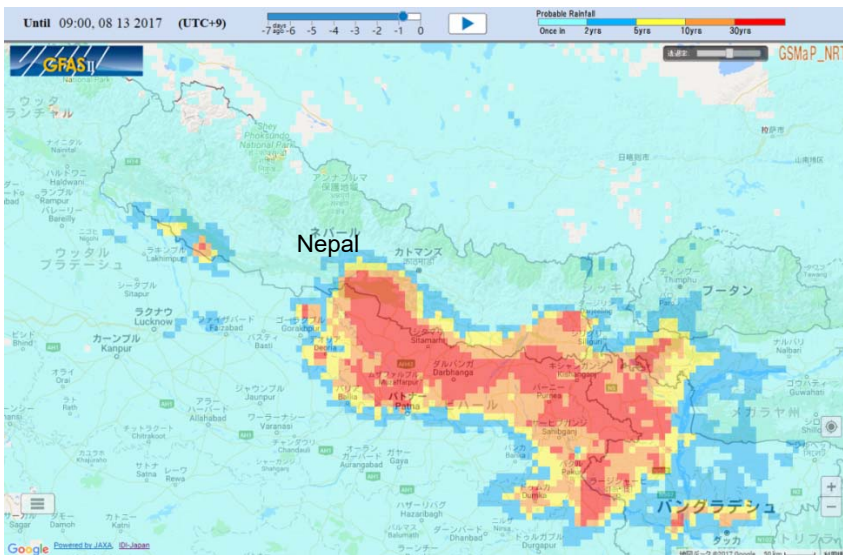
Nepal (Terai Region) FLOODS

Country and Districts	Nepal (Terai Region) Bardiya, Banke, Dang, Rautahat, Sarlahi, Siraha, Saptari, Sunsari, Morang, Jhapa, Chitawan, etc.	Death	160
Date of Occurrence	August 10, 2017	Missing	29
Outline	Days of incessant rain caused severe floods and landslides particularly in Terai region.		

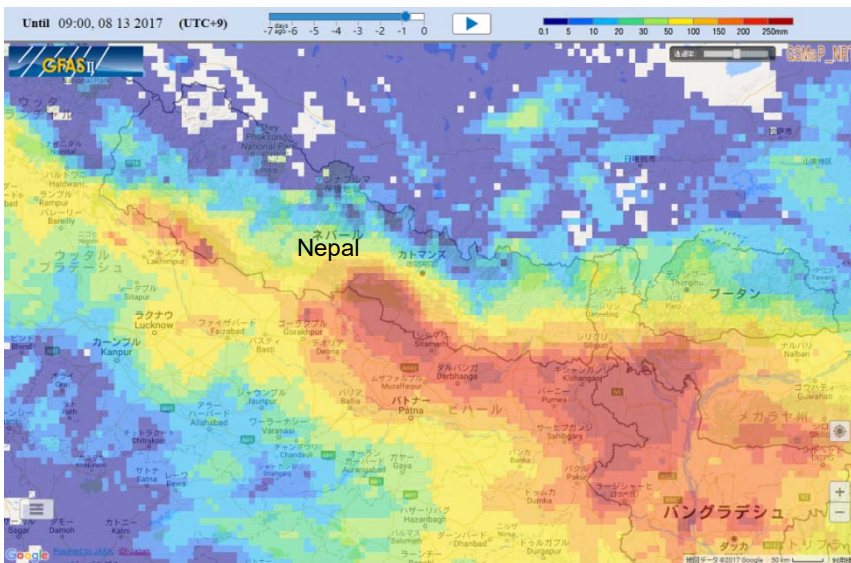
Precipitation Data from GFASII (Global Flood Alert System Ver.2.1)

GRASII is operated by Infrastructure Development Institute-Japan.

72 Hours Probable Rainfall (9:00am, August 10 - 9:00am, August 13 JST)



72 Hours Accumulated Rainfall (9:00am, August 10 - 9:00am, August 13 JST)



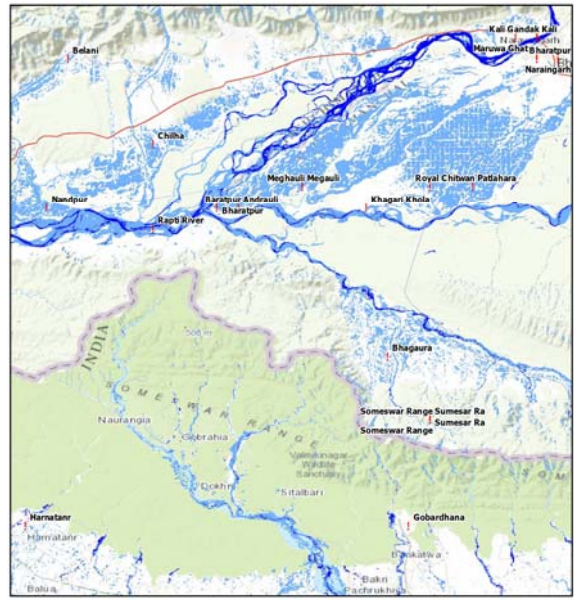
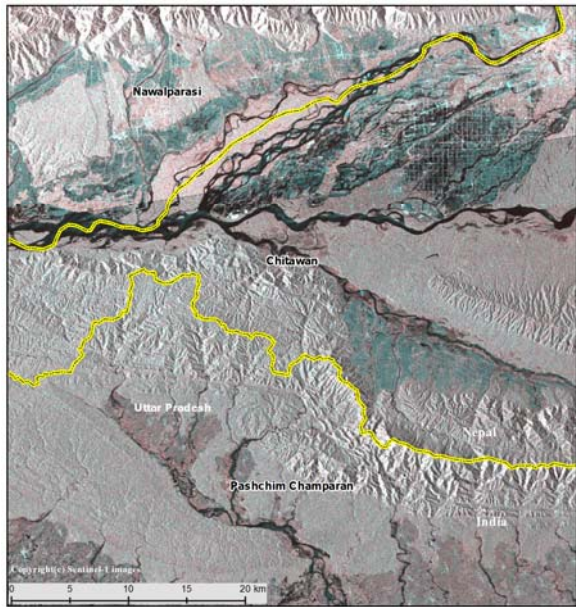
Inundated Areas from Nepal to India (Uttar Pradesh) (August 13, 2017 IWMI)



Flood Extent of each district using satellite data are;
 Chitawan 254km², Kapilbastu 435km², Nawalparasi 415km²,
 Rupandehi 329km²

Legend
 Disaster Image :Sentinel-1
 Date :13 Aug. 2017

- Flood
- River/Permanent water
- District Boundary
- State boundary
- Rivers
- Road
- Cities/Town



出典 : <http://reliefweb.int/map/nepal/nepal-mapping-inundation-extent-nepal-and-india-uttar-pradesh-using-esa-sentinel-1>

